

REL-MR- 12DC/21 - Single relay

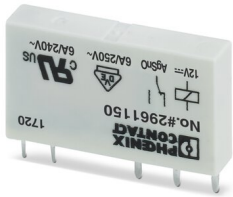


2961150

<https://www.phoenixcontact.com/au/products/2961150>

Please be informed that the data shown in this PDF document is generated from our Online Catalog. Please find the complete data in the user documentation. Our General Terms of Use for Downloads are valid.

Plug-in miniature power relay, with power contact, 1 changeover contact, input voltage 12 V DC



Your advantages

- Safe isolation according to DIN EN 50178 between coil and contact
- High degree of protection up to RT III depending on type (wash-proof)
- Power contacts up to 6 A

Commercial Data

Item number	2961150
Packing unit	10 pc
Minimum order quantity	10 pc
Sales Key	CK6195
Product Key	CK6195
Catalog Page	Page 284 (C-5-2019)
GTIN	4017918159566
Weight per Piece (including packing)	6.62 g
Weight per Piece (excluding packing)	5 g
Customs tariff number	85364190
Country of origin	CZ

REL-MR- 12DC/21 - Single relay



2961150

<https://www.phoenixcontact.com/au/products/2961150>

Technical Data

Product properties

Product type	Single relay
Set comprises	2903371 RIF-0-RPT-12DC/21
	2903375 RIF-0-RSC-12DC/21
Operating mode	100% operating factor
Mechanical service life	2x 10 ⁷ cycles

Insulation characteristics

Overvoltage category	III
Pollution degree	3

Electrical properties

Maximum power dissipation for nominal condition	0.17 W
Test voltage (Winding/contact)	4 kV AC (50 Hz, 1 min., winding/contact)

Input data

Coil side

Nominal input voltage U _N	12 V DC
Input voltage range	7.2 V DC ... 33 V DC
Input voltage range in reference to U _N	see diagram
Typical input current at U _N	14 mA
Typical response time	5 ms
Typical release time	2.5 ms
Coil resistance	848 Ω ±10 % (at 20 °C)

Output data

Switching

Contact type	1 changeover contact
Type of switch contact	Single contact
Drive and function	monostable
Contact material	AgSnO
Maximum switching voltage	250 V AC/DC
Minimum switching voltage	5 V (at 100 mA)
Limiting continuous current	6 A
Maximum inrush current	10 A (4 s)
Min. switching current	10 mA (at 12 V)
Interrupting rating (ohmic load) max.	140 W (at 24 V DC)
	20 W (at 48 V DC)
	18 W (at 60 V DC)
	23 W (at 110 V DC)
	40 W (at 220 V DC)

REL-MR- 12DC/21 - Single relay



2961150

<https://www.phoenixcontact.com/au/products/2961150>

Switching capacity	1500 VA (for 250 V AC)
	2 A (at 24 V, DC13)
	0.2 A (at 110 V, DC13)
	0.1 A (at 220 V, DC13)
	3 A (at 24 V, AC15)
	3 A (at 120 V, AC15)
Motor load according to UL 508	3 A (at 230 V, AC15)
	1/4 HP, 240 - 277 V AC (N/O contact)
	1/6 HP, 240 - 277 V AC (N/C contact)

Connection data

Connection method	Plug / solder connection
-------------------	--------------------------

Environmental and real-life conditions

Ambient conditions

Degree of protection	RT III
Ambient temperature (operation)	-40 °C ... 85 °C
Ambient temperature (storage/transport)	-40 °C ... 85 °C

Approval data

Corrosive gas test

Identification	ISA-S71.04. G3 Harsh Group
	EN 60068-2-60

Standards and regulations

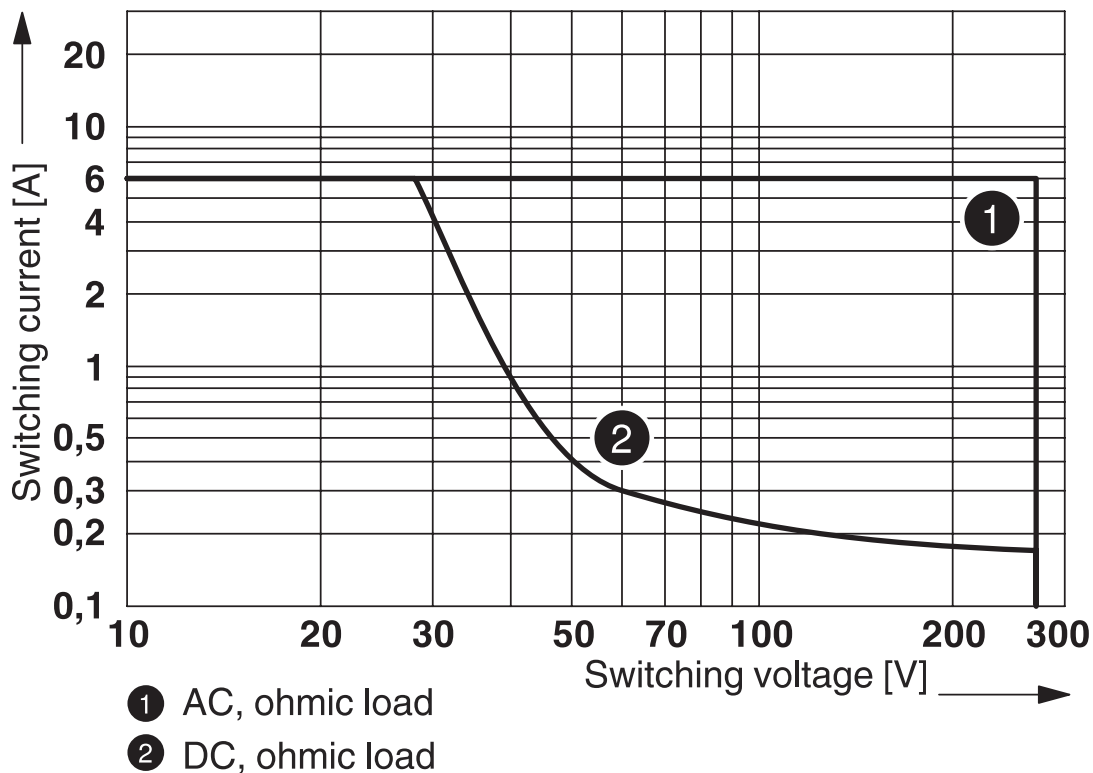
Standards/regulations	IEC 60664
	EN 50178
	EN 61810-1

Mounting

Assembly instructions	in rows with zero spacing
Mounting position	any

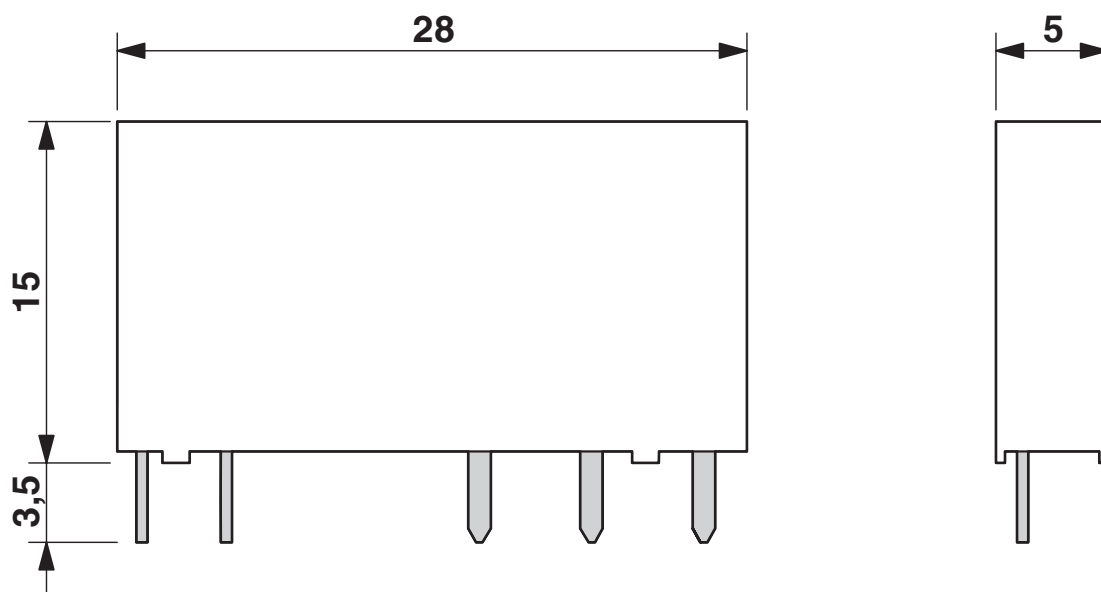
Drawings

Diagram



Interrupting rating

Dimensional drawing



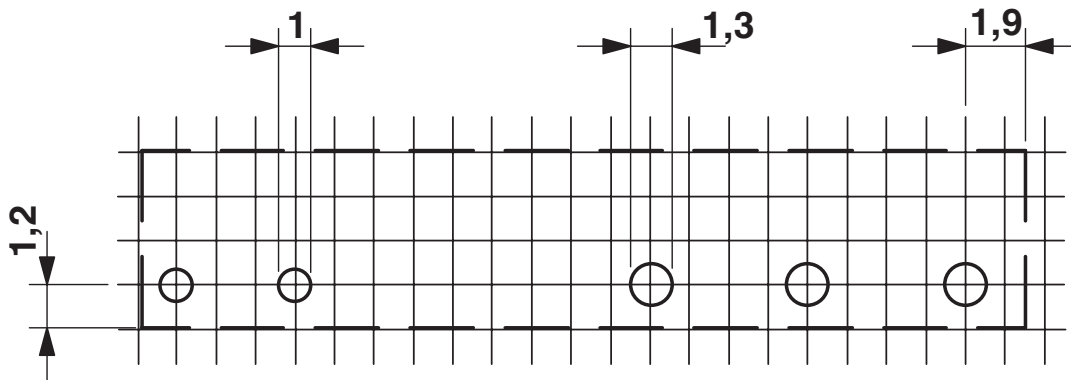
REL-MR- 12DC/21 - Single relay



2961150

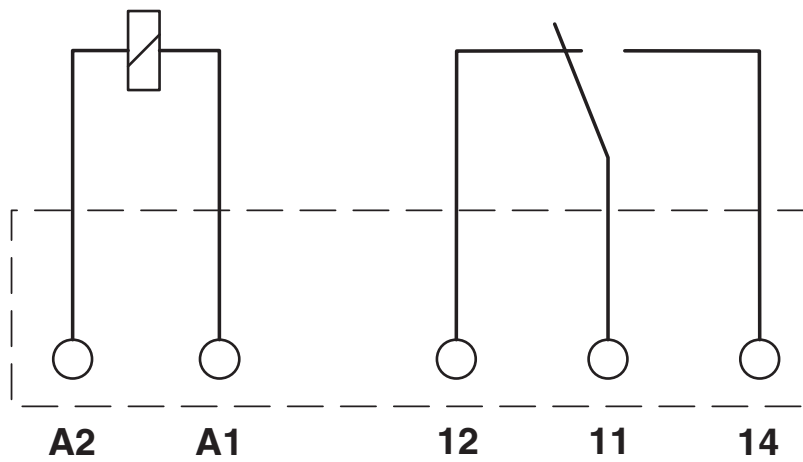
<https://www.phoenixcontact.com/au/products/2961150>

Drilling plan/solder pad geometry



a = pitch division 1.25 mm and 1.27 mm

Circuit diagram



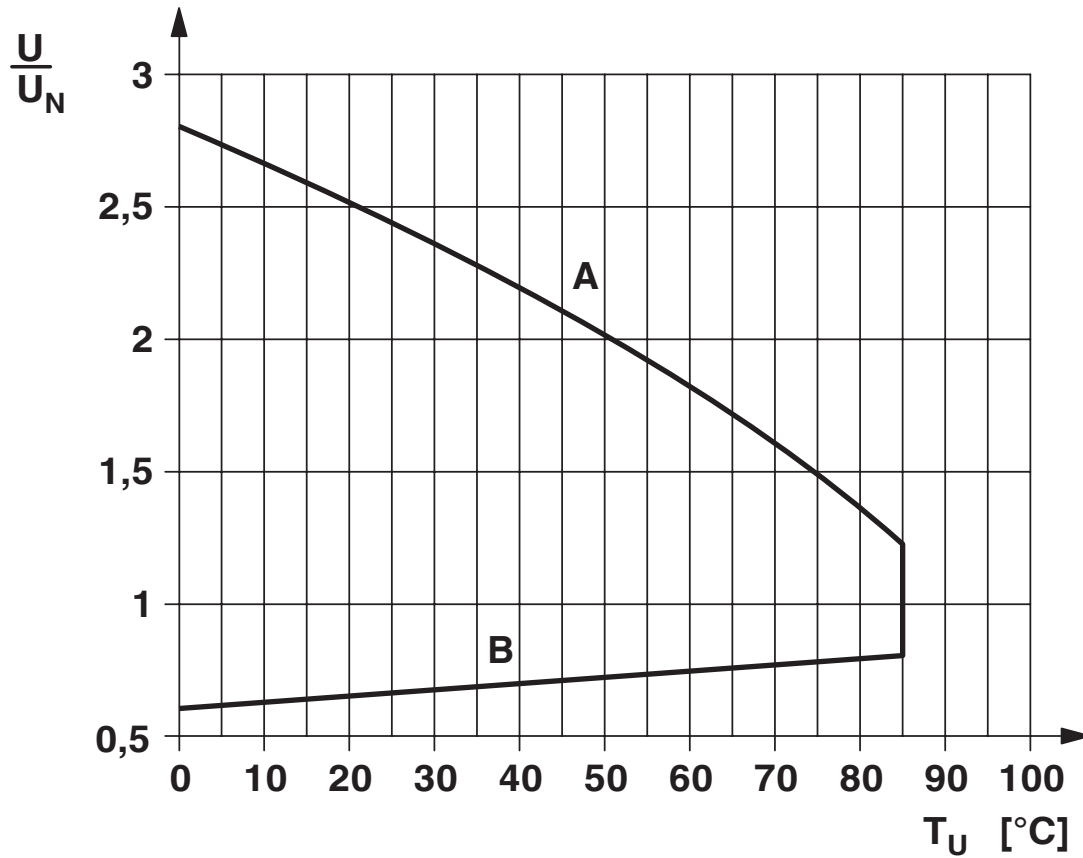
REL-MR- 12DC/21 - Single relay



2961150

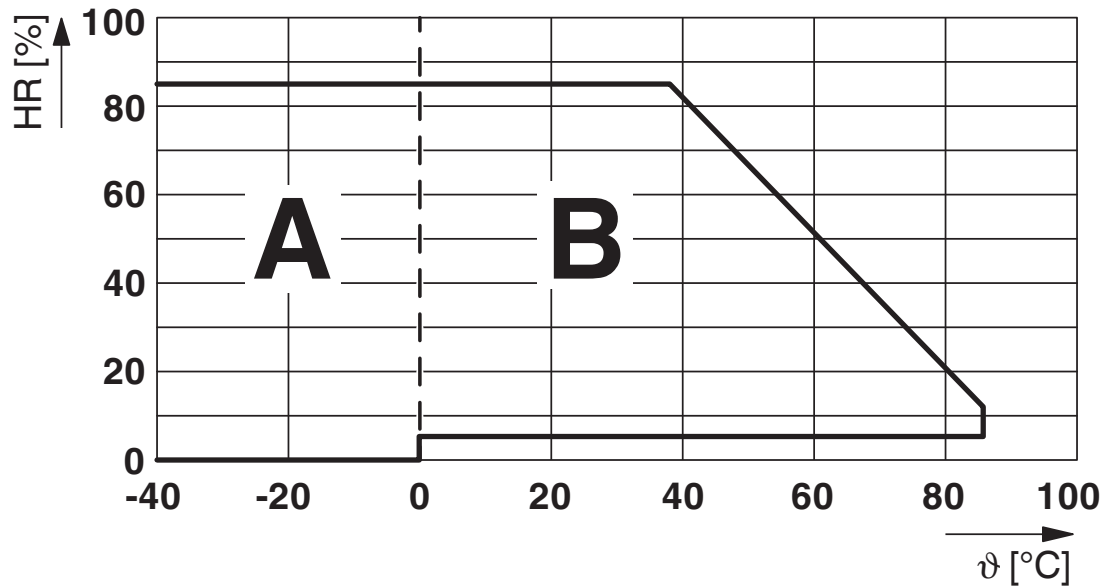
<https://www.phoenixcontact.com/au/products/2961150>

Diagram



Input voltage range

Diagram



Permissible humidity for operation and storage.

The maximum permissible ambient temperature as specified in the data sheet must be observed.

Area A: Ice buildup at ambient temperatures $\leq 0^\circ\text{C}$ must be prevented

Area B: Condensation at ambient temperatures $> 0^\circ\text{C}$ must be prevented

On 30 full days that are naturally distributed across an entire year, a humidity level of 95% is permissible at an ambient temperature $\leq 25^\circ\text{C}$.

2961150

<https://www.phoenixcontact.com/au/products/2961150>

Approvals



cUL Recognized
Approval ID: FILE E 172140



UL Recognized
Approval ID: FILE E 172140



EAC
Approval ID: TR_TS_D_00573_c



UL Recognized
Approval ID: FILE E 172140



EAC
Approval ID: RU*C-DE.*08.B.00010



VDE Zeichengenehmigung
Approval ID: 40010212



VDE Zeichengenehmigung
Approval ID: 40032864



PRS
Approval ID: TE/2109/880590/16



cUL Recognized
Approval ID: FILE E 172140



VDE Zeichengenehmigung
Approval ID: 40054426



cUL Recognized
Approval ID: FILE E 172140



UL Recognized
Approval ID: FILE E 172140

REL-MR- 12DC/21 - Single relay

2961150

<https://www.phoenixcontact.com/au/products/2961150>



REL-MR- 12DC/21 - Single relay



2961150

<https://www.phoenixcontact.com/au/products/2961150>

Classifications

ECLASS

ECLASS-10.0.1	27371601
ECLASS-11.0	27371601
ECLASS-12.0	27371601
ECLASS-13.0	27371601

ETIM

ETIM 8.0	EC001437
----------	----------

UNSPSC

UNSPSC 21.0	39122300
-------------	----------

REL-MR- 12DC/21 - Single relay



2961150

<https://www.phoenixcontact.com/au/products/2961150>

Environmental Product Compliance

China RoHS	Environmentally friendly use period: unlimited = EFUP-e
	No hazardous substances above threshold values

REL-MR- 12DC/21 - Single relay

2961150

<https://www.phoenixcontact.com/au/products/2961150>



Accessories

PLC-BPIT- 12DC/21 - Relay base

2900444

<https://www.phoenixcontact.com/au/products/2900444>



6.2 mm PLC basic terminal block with Push-in connection, without relay or solid-state relay, for mounting on DIN rail NS 35/7,5, 1 changeover contact, input voltage 12 V DC

PLC-BSC- 12DC/21 - Relay base

2966896

<https://www.phoenixcontact.com/au/products/2966896>



6.2 mm PLC basic terminal block with screw connection, without relay or solid-state relay, for mounting on DIN rail NS 35/7,5, 1 changeover contact, input voltage 12 V DC

REL-MR- 12DC/21 - Single relay

2961150

<https://www.phoenixcontact.com/au/products/2961150>



RIF-0-BPT/21 - Relay base

2900958

<https://www.phoenixcontact.com/au/products/2900958>

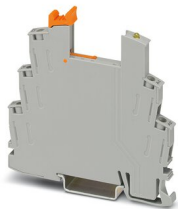


Relay base RIF-0..., for miniature power relay with 1 changeover contact or solid-state relays of the same design, Push-in connection, for mounting on NS 35/7,5

RIF-0-BSC/21 - Relay base

2900957

<https://www.phoenixcontact.com/au/products/2900957>



RIF-0... relay base, for miniature power relay with 1 changeover contact or identical solid-state relays, screw connection, for mounting on NS 35/7,5

Phoenix Contact 2023 © - all rights reserved
<https://www.phoenixcontact.com>

PHOENIX CONTACT PTY Ltd
Unit 7, 2-8 South Street
Rydalmere NSW 2116
1300 786 411
customerservice@phoenixcontact.com.au