

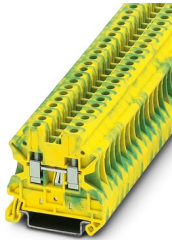
UT 4-PE - Ground terminal



3044128

<https://www.phoenixcontact.com/au/products/3044128>

Please be informed that the data shown in this PDF document is generated from our Online Catalog. Please find the complete data in the user documentation. Our General Terms of Use for Downloads are valid.



Ground terminal, number of connections: 2, connection method: Screw connection, cross section: 0.14 mm² - 6 mm², mounting type: NS 35/7,5, NS 35/15, color: green-yellow

Your advantages

- Tested for railway applications

Commercial Data

Item number	3044128
Packing unit	50 pc
Minimum order quantity	50 pc
Sales Key	BE1121
Product Key	BE1121
Catalog Page	Page 159 (C-1-2019)
GTIN	4017918960407
Weight per Piece (including packing)	13.382 g
Weight per Piece (excluding packing)	12.7 g
Customs tariff number	85369010
Country of origin	DE

UT 4-PE - Ground terminal



3044128

<https://www.phoenixcontact.com/au/products/3044128>

Technical Data

Product properties

Product type	Ground terminal block
Area of application	Railway industry
	Machine building
	Plant engineering
	Process industry
Number of connections	2
Number of rows	1

Insulation characteristics

Overvoltage category	III
Degree of pollution	3

Electrical properties

Rated surge voltage	8 kV
Maximum power dissipation for nominal condition	1.02 W

Connection data

Grounding foot	Yes
Number of connections per level	2
Nominal cross section	4 mm ²

Level 1 above 1 below 1

Screw thread	M3
Note	Please observe the current carrying capacity of the DIN rails.
Tightening torque	0.6 ... 0.8 Nm
Stripping length	9 mm
Internal cylindrical gage	A4
Connection in acc. with standard	IEC 60947-7-2
Conductor cross section rigid	0.14 mm ² ... 6 mm ²
Cross section AWG	26 ... 10 (converted acc. to IEC)
Conductor cross section flexible	0.14 mm ² ... 6 mm ²
Conductor cross section, flexible [AWG]	26 ... 10 (converted acc. to IEC)
Conductor cross-section flexible (ferrule without plastic sleeve)	0.25 mm ² ... 4 mm ²
Flexible conductor cross section (ferrule with plastic sleeve)	0.25 mm ² ... 4 mm ²
Note	Note: Product releases, connection cross sections and notes on connecting aluminum cables can be found in the download area.

Ex data

Rated data (ATEX/IECEx)

Identification	<input type="checkbox"/> II 2 GD Ex eb IIC Gb
Operating temperature range	-60 °C ... 110 °C

UT 4-PE - Ground terminal



3044128

<https://www.phoenixcontact.com/au/products/3044128>

Ex-certified accessories	3047028 D-UT 2,5/10
	1205053 SZS 0,6X3,5
	3022276 CLIPFIX 35-5
	3022218 CLIPFIX 35
output	(Permanent)

Ex connection data General

Torque range	0.6 Nm ... 0.8 Nm
Nominal cross section	4 mm ²
Rated cross section AWG	12
Connection capacity rigid	0.14 mm ² ... 6 mm ²
Connection capacity AWG	26 ... 10
Connection capacity flexible	0.14 mm ² ... 4 mm ²
Connection capacity AWG	26 ... 12

Dimensions

Width	6.2 mm
End cover width	2.2 mm
Height	46.9 mm
Height NS 35/15	55 mm
Height NS 35/7,5	47.5 mm
Length	47.7 mm

Material specifications

Color	green-yellow
Flammability rating according to UL 94	V0
Insulating material group	I
Insulating material	PA
Static insulating material application in cold	-60 °C
Temperature index of insulation material (DIN EN 60216-1 (VDE 0304-21))	125 °C
Relative insulation material temperature index (Elec., UL 746 B)	130 °C
Fire protection for rail vehicles (DIN EN 45545-2) R22	HL 1 - HL 3
Fire protection for rail vehicles (DIN EN 45545-2) R23	HL 1 - HL 3
Fire protection for rail vehicles (DIN EN 45545-2) R24	HL 1 - HL 3
Fire protection for rail vehicles (DIN EN 45545-2) R26	HL 1 - HL 3
Calorimetric heat release NFPA 130 (ASTM E 1354)	27,5 MJ/kg
Surface flammability NFPA 130 (ASTM E 162)	passed
Specific optical density of smoke NFPA 130 (ASTM E 662)	passed
Smoke gas toxicity NFPA 130 (SMP 800C)	passed

Mechanical properties

Mechanical data

Open side panel	Yes
-----------------	-----

UT 4-PE - Ground terminal



3044128

<https://www.phoenixcontact.com/au/products/3044128>

Environmental and real-life conditions

Ambient conditions

Ambient temperature (operation)	-60 °C ... 105 °C (max. short-term operating temperature RTI Elec.)
Ambient temperature (storage/transport)	-25 °C ... 60 °C (for a short time, not exceeding 24 h, -60 °C to +70 °C)
Ambient temperature (assembly)	-5 °C ... 70 °C
Ambient temperature (actuation)	-5 °C ... 70 °C
Permissible humidity (storage/transport)	30 % ... 70 %

Standards and regulations

Connection in acc. with standard	IEC 60947-7-2
----------------------------------	---------------

Mounting

Mounting type	NS 35/7,5
	NS 35/15

UT 4-PE - Ground terminal

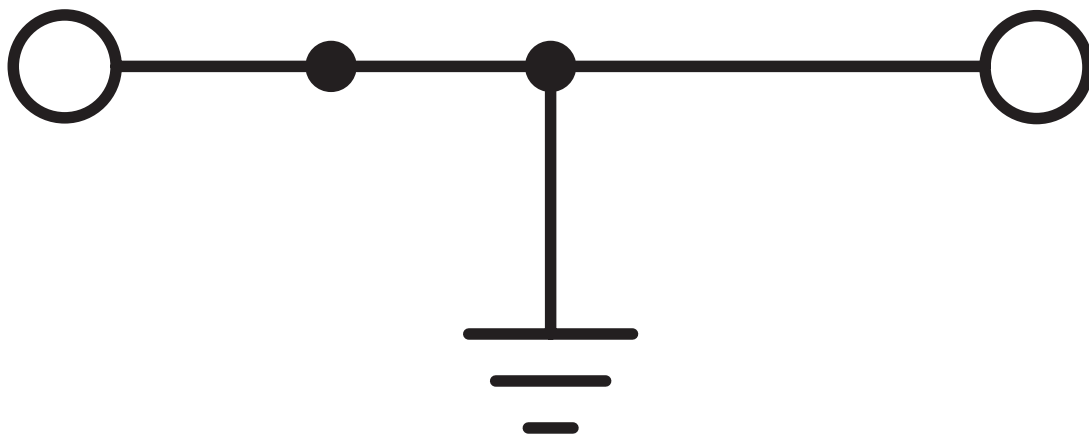
3044128

<https://www.phoenixcontact.com/au/products/3044128>



Drawings

Circuit diagram




UT 4-PE - Ground terminal





3044128


<https://www.phoenixcontact.com/au/products/3044128>

Approvals

 CSA Approval ID: 13631				
	Nominal Voltage U_N	Nominal Current I_N	Cross Section AWG	Cross Section mm^2
Use group B	-	-	26 - 10	-
Use group C	-	-	26 - 10	-

 IECEE CB Scheme Approval ID: DE1-63045				
--	--	--	--	--

 EAC Approval ID: RU C-DE.A*30.B.01742				
---	--	--	--	--

 cULus Recognized Approval ID: E60425				
	Nominal Voltage U_N	Nominal Current I_N	Cross Section AWG	Cross Section mm^2
Use group B	-	-	26 - 10	-
Multi-conductor connection	-	-	26 - 14	-
Use group C	-	-	26 - 10	-
Multi-conductor connection	-	-	26 - 14	-
Use group D	-	-	26 - 10	-
Multi-conductor connection	-	-	26 - 14	-

 RS Approval ID: 22.44.01.00083.250				
--	--	--	--	--

 VDE Gutachten mit Fertigungsüberwachung Approval ID: 40013715				
	Nominal Voltage U_N	Nominal Current I_N	Cross Section AWG	Cross Section mm^2
	-	-	-	0.2 - 4

UT 4-PE - Ground terminal



3044128

<https://www.phoenixcontact.com/au/products/3044128>



ATEX

Approval ID: KEMA04ATEX2048U



EAC Ex

Approval ID: RU C-DE.HA91.B.00066



IECEX

Approval ID: IECEX KEM 06.0027U



CCC

Approval ID: 2020322313000622



NEPSI

Approval ID: GYJ20.1194U



UKCA-EX

Approval ID: DEKRA 21UKEX0304U

UT 4-PE - Ground terminal

3044128

<https://www.phoenixcontact.com/au/products/3044128>



Classifications

ECLASS

ECLASS-11.0	27141141
ECLASS-13.0	27250103

ETIM

ETIM 8.0	EC000901
----------	----------

UNSPSC

UNSPSC 21.0	39121400
-------------	----------

UT 4-PE - Ground terminal

3044128

<https://www.phoenixcontact.com/au/products/3044128>



Environmental Product Compliance

REACH SVHC	Lead 7439-92-1
China RoHS	Environmentally Friendly Use Period = 50 years
	For information on hazardous substances, refer to the manufacturer's declaration available under "Downloads"

UT 4-PE - Ground terminal

3044128

<https://www.phoenixcontact.com/au/products/3044128>



Accessories

FBS 2-6 - Plug-in bridge

3030336

<https://www.phoenixcontact.com/au/products/3030336>



Plug-in bridge, pitch: 6.2 mm, number of positions: 2, color: red

FBS 3-6 - Plug-in bridge

3030242

<https://www.phoenixcontact.com/au/products/3030242>



Plug-in bridge, pitch: 6.2 mm, number of positions: 3, color: red

UT 4-PE - Ground terminal

3044128

<https://www.phoenixcontact.com/au/products/3044128>



FBS 4-6 - Plug-in bridge

3030255

<https://www.phoenixcontact.com/au/products/3030255>



Plug-in bridge, pitch: 6.2 mm, number of positions: 4, color: red

FBS 5-6 - Plug-in bridge

3030349

<https://www.phoenixcontact.com/au/products/3030349>



Plug-in bridge, pitch: 6.2 mm, number of positions: 5, color: red

UT 4-PE - Ground terminal

3044128

<https://www.phoenixcontact.com/au/products/3044128>



FBS 6-6 - Plug-in bridge

1008238

<https://www.phoenixcontact.com/au/products/1008238>



Plug-in bridge, One side not fully isolated, pitch: 6.2 mm, number of positions: 6, color: red

FBS 10-6 - Plug-in bridge

3030271

<https://www.phoenixcontact.com/au/products/3030271>



Plug-in bridge, pitch: 6.2 mm, number of positions: 10, color: red

UT 4-PE - Ground terminal

3044128

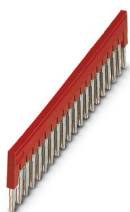
<https://www.phoenixcontact.com/au/products/3044128>



FBS 20-6 - Plug-in bridge

3030365

<https://www.phoenixcontact.com/au/products/3030365>



Plug-in bridge, pitch: 6.2 mm, number of positions: 20, color: red

FBS 50-6 - Plug-in bridge

3032224

<https://www.phoenixcontact.com/au/products/3032224>



Plug-in bridge, pitch: 6.2 mm, number of positions: 50, color: red

UT 4-PE - Ground terminal

3044128

<https://www.phoenixcontact.com/au/products/3044128>



FBSR 2-6 - Plug-in bridge

3033715

<https://www.phoenixcontact.com/au/products/3033715>



Plug-in bridge, pitch: 6.2 mm, number of positions: 2, color: red

FBSR 3-6 - Plug-in bridge

3001594

<https://www.phoenixcontact.com/au/products/3001594>



Plug-in bridge, pitch: 6.2 mm, number of positions: 3, color: red

UT 4-PE - Ground terminal

3044128

<https://www.phoenixcontact.com/au/products/3044128>



FBSR 4-6 - Plug-in bridge

3001595

<https://www.phoenixcontact.com/au/products/3001595>



Plug-in bridge, pitch: 6.2 mm, number of positions: 4, color: red

FBSR 5-6 - Plug-in bridge

3001596

<https://www.phoenixcontact.com/au/products/3001596>



Plug-in bridge, pitch: 6.2 mm, number of positions: 5, color: red

UT 4-PE - Ground terminal

3044128

<https://www.phoenixcontact.com/au/products/3044128>



FBSR 10-6 - Plug-in bridge

3033716

<https://www.phoenixcontact.com/au/products/3033716>

Plug-in bridge, pitch: 6.2 mm, number of positions: 10, color: red



FBSRH 2-6 - Short-circuit connector

3033812

<https://www.phoenixcontact.com/au/products/3033812>

Short-circuit connector, pitch: 6.2 mm, number of positions: 2, color: red



UT 4-PE - Ground terminal

3044128

<https://www.phoenixcontact.com/au/products/3044128>



FBS 2-6 BU - Plug-in bridge

3036932

<https://www.phoenixcontact.com/au/products/3036932>



Plug-in bridge, pitch: 6.2 mm, number of positions: 2, color: blue

FBS 3-6 BU - Plug-in bridge

3036945

<https://www.phoenixcontact.com/au/products/3036945>



Plug-in bridge, pitch: 6.2 mm, number of positions: 3, color: blue

UT 4-PE - Ground terminal

3044128

<https://www.phoenixcontact.com/au/products/3044128>



FBS 4-6 BU - Plug-in bridge

3036958

<https://www.phoenixcontact.com/au/products/3036958>



Plug-in bridge, pitch: 6.2 mm, number of positions: 4, color: blue

FBS 5-6 BU - Plug-in bridge

3036961

<https://www.phoenixcontact.com/au/products/3036961>



Plug-in bridge, pitch: 6.2 mm, number of positions: 5, color: blue

UT 4-PE - Ground terminal

3044128

<https://www.phoenixcontact.com/au/products/3044128>



FBS 10-6 BU - Plug-in bridge

3032198

<https://www.phoenixcontact.com/au/products/3032198>

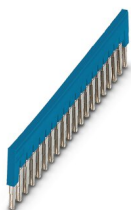


Plug-in bridge, pitch: 6.2 mm, number of positions: 10, color: blue

FBS 20-6 BU - Plug-in bridge

3032208

<https://www.phoenixcontact.com/au/products/3032208>



Plug-in bridge, pitch: 6.2 mm, number of positions: 20, color: blue

UT 4-PE - Ground terminal

3044128

<https://www.phoenixcontact.com/au/products/3044128>



FBS 50-6 BU - Plug-in bridge

3032211

<https://www.phoenixcontact.com/au/products/3032211>



Plug-in bridge, pitch: 6.2 mm, number of positions: 50, color: blue

D-UT 2,5/10 - End cover

3047028

<https://www.phoenixcontact.com/au/products/3047028>



End cover, length: 47 mm, width: 2.2 mm, height: 39.8 mm, color: gray

UT 4-PE - Ground terminal

3044128

<https://www.phoenixcontact.com/au/products/3044128>



ATP-UT - Partition plate

3047167

<https://www.phoenixcontact.com/au/products/3047167>



Partition plate, length: 53.4 mm, width: 2.2 mm, height: 45.7 mm, color: gray

SZS 0,6X3,5 - Screwdriver

1205053

<https://www.phoenixcontact.com/au/products/1205053>



Actuation tool, for ST terminal blocks, insulated, also suitable for use as a bladed screwdriver, size: 0.6 x 3.5 x 100 mm, 2-component grip, with non-slip grip

UT 4-PE - Ground terminal

3044128

<https://www.phoenixcontact.com/au/products/3044128>



X-PEN 0,35 - Marker pen

0811228

<https://www.phoenixcontact.com/au/products/0811228>



Marker pen without ink cartridge, for manual labeling of markers, labeling extremely wipe-proof, line thickness 0.35 mm

WS UT 4 - Warning label

3047332

<https://www.phoenixcontact.com/au/products/3047332>

Warning sign for UT terminal blocks



UT 4-PE - Ground terminal

3044128

<https://www.phoenixcontact.com/au/products/3044128>



SF-SL 0,6X3,5-100 S-VDE - Screwdriver

1212587

<https://www.phoenixcontact.com/au/products/1212587>



Actuation tool, for ST terminal blocks, VDE insulated, with slimmer insulation integrated in the blade, also suitable for use as a bladed screwdriver, size: 0.6 x 3.5 x 100 mm, 2-component grip, with non-slip grip

NS 35/ 7,5 PERF 2000MM - DIN rail perforated

0801733

<https://www.phoenixcontact.com/au/products/0801733>



DIN rail perforated, acc. to EN 60715, material: Steel, galvanized, passivated with a thick layer, Standard profile, color: silver, Pack of 25 (50 m)

UT 4-PE - Ground terminal

3044128

<https://www.phoenixcontact.com/au/products/3044128>



NS 35/ 7,5 UNPERF 2000MM - DIN rail, unperforated

0801681

<https://www.phoenixcontact.com/au/products/0801681>



DIN rail, unperforated, acc. to EN 60715, material: Steel, galvanized, passivated with a thick layer, Standard profile, color: silver, Pack of 25 (50 m)

NS 35/ 7,5 WH PERF 2000MM - DIN rail perforated

1204119

<https://www.phoenixcontact.com/au/products/1204119>



DIN rail perforated, acc. to EN 60715, material: Steel, Galvanized, white passivated, Standard profile, color: silver, Pack of 25 (50 m)

UT 4-PE - Ground terminal

3044128

<https://www.phoenixcontact.com/au/products/3044128>



NS 35/ 7,5 WH UNPERF 2000MM-VPE 10 - DIN rail, unperforated

1204122

<https://www.phoenixcontact.com/au/products/1204122>



DIN rail, unperforated, acc. to EN 60715, material: Steel, Galvanized, white passivated, Standard profile, color: silver, Pack of 10 (20 m)

NS 35/ 7,5 AL UNPERF 2000MM - DIN rail, unperforated

0801704

<https://www.phoenixcontact.com/au/products/0801704>



DIN rail, unperforated, acc. to EN 60715, material: Aluminum, uncoated, Standard profile, color: silver, Pack of 25 (50 m)

UT 4-PE - Ground terminal

3044128

<https://www.phoenixcontact.com/au/products/3044128>



NS 35/ 7,5 ZN PERF 2000MM - DIN rail perforated

1206421

<https://www.phoenixcontact.com/au/products/1206421>



DIN rail perforated, acc. to EN 60715, material: Steel, galvanized, Standard profile, color: silver, Pack of 25 (50 m)

NS 35/ 7,5 ZN UNPERF 2000MM - DIN rail, unperforated

1206434

<https://www.phoenixcontact.com/au/products/1206434>



DIN rail, unperforated, acc. to EN 60715, material: Steel, galvanized, Standard profile, color: silver, Pack of 25 (50 m)

UT 4-PE - Ground terminal

3044128

<https://www.phoenixcontact.com/au/products/3044128>



NS 35/ 7,5 CU UNPERF 2000MM-VPE 10 - DIN rail, unperforated

0801762

<https://www.phoenixcontact.com/au/products/0801762>



DIN rail, unperforated, acc. to EN 60715, material: Copper, uncoated, Standard profile, color: copper-colored, Pack of 10 (20 m)

NS 35/ 7,5 CAP - End cap

1206560

<https://www.phoenixcontact.com/au/products/1206560>

DIN rail end piece, for DIN rail NS 35/7.5



UT 4-PE - Ground terminal

3044128

<https://www.phoenixcontact.com/au/products/3044128>



NS 35/15 PERF 2000MM - DIN rail perforated

1201730

<https://www.phoenixcontact.com/au/products/1201730>



DIN rail perforated, similar to EN 60715, material: Steel, galvanized, passivated with a thick layer, Standard profile, color: silver, Pack of 25 (50 m)

NS 35/15 UNPERF 2000MM - DIN rail, unperforated

1201714

<https://www.phoenixcontact.com/au/products/1201714>



DIN rail, unperforated, similar to EN 60715, material: Steel, galvanized, passivated with a thick layer, Standard profile, color: silver, Pack of 25 (50 m)

UT 4-PE - Ground terminal

3044128

<https://www.phoenixcontact.com/au/products/3044128>



NS 35/15 WH PERF 2000MM - DIN rail perforated

0806602

<https://www.phoenixcontact.com/au/products/0806602>



DIN rail perforated, similar to EN 60715, material: Steel, Galvanized, white passivated, Standard profile, color: white, Pack of 25 (50 m)

NS 35/15 WH UNPERF 2000MM-VPE 10 - DIN rail, unperforated

1204135

<https://www.phoenixcontact.com/au/products/1204135>



DIN rail, unperforated, similar to EN 60715, material: Steel, Galvanized, white passivated, Standard profile, color: silver, Pack of 10 (20 m)

UT 4-PE - Ground terminal

3044128

<https://www.phoenixcontact.com/au/products/3044128>



NS 35/15 AL UNPERF 2000MM - DIN rail, unperforated

1201756

<https://www.phoenixcontact.com/au/products/1201756>



DIN rail, unperforated, similar to EN 60715, material: Aluminum, uncoated, Standard profile, color: silver

NS 35/15 ZN PERF 2000MM - DIN rail perforated

1206599

<https://www.phoenixcontact.com/au/products/1206599>



DIN rail perforated, similar to EN 60715, material: Steel, galvanized, Standard profile, color: silver, Pack of 25 (50 m)

UT 4-PE - Ground terminal

3044128

<https://www.phoenixcontact.com/au/products/3044128>



NS 35/15 ZN UNPERF 2000MM - DIN rail, unperforated

1206586

<https://www.phoenixcontact.com/au/products/1206586>



DIN rail, unperforated, similar to EN 60715, material: Steel, galvanized, Standard profile, color: silver, Pack of 25 (50 m)

NS 35/15 CU UNPERF 2000MM-VPE 10 - DIN rail, unperforated

1201895

<https://www.phoenixcontact.com/au/products/1201895>



DIN rail, unperforated, similar to EN 60715, material: Copper, uncoated, Standard profile, color: copper-colored, Pack of 10 (20 m)

UT 4-PE - Ground terminal

3044128

<https://www.phoenixcontact.com/au/products/3044128>



NS 35/15 CAP - End cap

1206573

<https://www.phoenixcontact.com/au/products/1206573>

DIN rail end piece, for DIN rail NS 35/15



NS 35/15-2,3 UNPERF 2000MM-VPE 10 - DIN rail, unperforated

1201798

<https://www.phoenixcontact.com/au/products/1201798>



DIN rail, unperforated, acc. to EN 60715, material: Steel, galvanized, passivated with a thick layer, Standard profile 2.3 mm, color: silver, Pack of 10 (20 m)

UT 4-PE - Ground terminal

3044128

<https://www.phoenixcontact.com/au/products/3044128>



ZB 6:UNBEDRUCKT - Zack marker strip

1051003

<https://www.phoenixcontact.com/au/products/1051003>



Zack marker strip, Strip, white, unlabeled, can be labeled with: PLOTMARK, CMS-P1-PLOTTER, mounting type: snapped, for terminal block width: 6.2 mm, lettering field size: 6.15 x 10.5 mm, Number of individual labels: 10

ZB 6 CUS - Zack marker strip

0824992

<https://www.phoenixcontact.com/au/products/0824992>



Zack marker strip, can be ordered: Strip, white, labeled according to customer specifications, mounting type: snap into tall marker groove, for terminal block width: 6.2 mm, lettering field size: 6.15 x 10.5 mm, Number of individual labels: 10

UT 4-PE - Ground terminal

3044128

<https://www.phoenixcontact.com/au/products/3044128>



ZB 6,LGS:FORTL.ZAHLEN - Zack marker strip

1051016

<https://www.phoenixcontact.com/au/products/1051016>

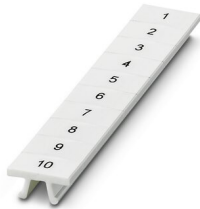


Zack marker strip, Strip, white, labeled, can be labeled with: CMS-P1-PLOTTER, printed horizontally: consecutive numbers 1 ... 10, 11 ... 20, etc. up to 491 ... 500, mounting type: snapped, for terminal block width: 6.2 mm, lettering field size: 6. 15 x 10.5 mm, Number of individual labels: 10

ZB 6,QR:FORTL.ZAHLEN - Zack marker strip

1051029

<https://www.phoenixcontact.com/au/products/1051029>



Zack marker strip, Strip, white, labeled, can be labeled with: CMS-P1-PLOTTER, Printed vertically: consecutive numbers 1 ... 10, 11 ... 20, etc. up to 491 ... 500, mounting type: snapped, for terminal block width: 6.2 mm, lettering field size: 6. 15 x 10.5 mm, Number of individual labels: 10

UT 4-PE - Ground terminal

3044128

<https://www.phoenixcontact.com/au/products/3044128>



ZB 6,LGS:GLEICHE ZAHLEN - Zack marker strip

1051032

<https://www.phoenixcontact.com/au/products/1051032>



Zack marker strip, Strip, white, labeled, can be labeled with: CMS-P1-PLOTTER, printed horizontally: Identical numbers 1 or 2, etc. up to 100, mounting type: snapped, for terminal block width: 6.2 mm, lettering field size: 6.15 x 10.5 mm, Number of individual labels: 10

ZB 6,LGS:L1-N,PE - Marker for terminal blocks

1051414

<https://www.phoenixcontact.com/au/products/1051414>



Marker for terminal blocks, Strip, white, labeled, can be labeled with: CMS-P1-PLOTTER, horizontal: L1, L2, L3, N, PE, L1, L2, L3, N, PE, mounting type: snapped, for terminal block width: 6.2 mm, lettering field size: 6.15 x 10.5 mm, Number of individual labels: 10

UT 4-PE - Ground terminal

3044128

<https://www.phoenixcontact.com/au/products/3044128>



ZB 6,LGS:U-N - Marker for terminal blocks

1051430

<https://www.phoenixcontact.com/au/products/1051430>



Marker for terminal blocks, Strip, white, labeled, can be labeled with: CMS-P1-PLOTTER, printed horizontally: U, V, W, N, GND, U, V, W, N, GND, mounting type: snapped, for terminal block width: 6.2 mm, lettering field size: 6.15 x 10.5 mm, Number of individual labels: 10

UC-TM 6 - Marker for terminal blocks

0818085

<https://www.phoenixcontact.com/au/products/0818085>



Marker for terminal blocks, Sheet, white, unlabeled, can be labeled with: BLUEMARK ID COLOR, BLUEMARK ID, BLUEMARK CLED, PLOTMARK, CMS-P1-PLOTTER, mounting type: snapped, for terminal block width: 6.2 mm, lettering field size: 5.6 x 10.5 mm, Number of individual labels: 80

UT 4-PE - Ground terminal

3044128

<https://www.phoenixcontact.com/au/products/3044128>



UC-TM 6 CUS - Marker for terminal blocks

0824589

<https://www.phoenixcontact.com/au/products/0824589>



Marker for terminal blocks, can be ordered: by sheet, white, labeled according to customer specifications, mounting type: snap into tall marker groove, for terminal block width: 6.2 mm, lettering field size: 5.6 x 10.5 mm, Number of individual labels: 80

UCT-TM 6 - Marker for terminal blocks

0828736

<https://www.phoenixcontact.com/au/products/0828736>



Marker for terminal blocks, Sheet, white, unlabeled, can be labeled with: TOPMARK NEO, TOPMARK LASER, BLUEMARK ID COLOR, BLUEMARK ID, BLUEMARK CLED, THERMOMARK PRIME, THERMOMARK CARD 2.0, THERMOMARK CARD, mounting type: snapped, for terminal block width: 6.2 mm, lettering field size: 5.6 x 10.5 mm, Number of individual labels: 60

UT 4-PE - Ground terminal

3044128

<https://www.phoenixcontact.com/au/products/3044128>



UCT-TM 6 CUS - Marker for terminal blocks

0829602

<https://www.phoenixcontact.com/au/products/0829602>



Marker for terminal blocks, can be ordered: by sheet, white, labeled according to customer specifications, mounting type: snap into tall marker groove, for terminal block width: 6.2 mm, lettering field size: 5.6 x 10.5 mm, Number of individual labels: 60

MPS-MT - Test plugs

0201744

<https://www.phoenixcontact.com/au/products/0201744>



Test plugs, with solder connection up to 1 mm² conductor cross section, color: gray

UT 4-PE - Ground terminal

3044128

<https://www.phoenixcontact.com/au/products/3044128>



MPS-IH WH - Insulating sleeve

0201663

<https://www.phoenixcontact.com/au/products/0201663>

Insulating sleeve, color: white



MPS-IH RD - Insulating sleeve

0201676

<https://www.phoenixcontact.com/au/products/0201676>

Insulating sleeve, color: red



UT 4-PE - Ground terminal

3044128

<https://www.phoenixcontact.com/au/products/3044128>

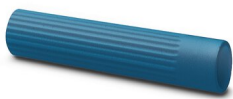


MPS-IH BU - Insulating sleeve

0201689

<https://www.phoenixcontact.com/au/products/0201689>

Insulating sleeve, color: blue



MPS-IH YE - Insulating sleeve

0201692

<https://www.phoenixcontact.com/au/products/0201692>

Insulating sleeve, color: yellow



UT 4-PE - Ground terminal

3044128

<https://www.phoenixcontact.com/au/products/3044128>



MPS-IH GN - Insulating sleeve

0201702

<https://www.phoenixcontact.com/au/products/0201702>

Insulating sleeve, color: green



MPS-IH GY - Insulating sleeve

0201728

<https://www.phoenixcontact.com/au/products/0201728>

Insulating sleeve, color: gray



UT 4-PE - Ground terminal

3044128

<https://www.phoenixcontact.com/au/products/3044128>



MPS-IH BK - Insulating sleeve

0201731

<https://www.phoenixcontact.com/au/products/0201731>

Insulating sleeve, color: black



PAI-4-FIX-5/6 BU - Test adapter

3035975

<https://www.phoenixcontact.com/au/products/3035975>

4 mm test adapter, for terminal blocks with 5.2 mm and 6.2 mm pitch



UT 4-PE - Ground terminal

3044128

<https://www.phoenixcontact.com/au/products/3044128>



PAI-4-FIX-5/6 OG - Test adapter

3035974

<https://www.phoenixcontact.com/au/products/3035974>



4 mm test adapter, for terminal blocks with 5.2 mm and 6.2 mm pitch

PAI-4-FIX-5/6 YE - Test adapter

3035977

<https://www.phoenixcontact.com/au/products/3035977>



4 mm test adapter, for terminal blocks with 5.2 mm and 6.2 mm pitch

UT 4-PE - Ground terminal

3044128

<https://www.phoenixcontact.com/au/products/3044128>



PAI-4-FIX-5/6 RD - Test adapter

3035976

<https://www.phoenixcontact.com/au/products/3035976>



4 mm test adapter, for terminal blocks with 5.2 mm and 6.2 mm pitch

PAI-4-FIX-5/6 GN - Test adapter

3035978

<https://www.phoenixcontact.com/au/products/3035978>



4 mm test adapter, for terminal blocks with 5.2 mm and 6.2 mm pitch

UT 4-PE - Ground terminal

3044128

<https://www.phoenixcontact.com/au/products/3044128>



PAI-4-FIX-5/6 BK - Test adapter

3035980

<https://www.phoenixcontact.com/au/products/3035980>



4 mm test adapter, for terminal blocks with 5.2 mm and 6.2 mm pitch

PAI-4-FIX-5/6 GY - Test adapter

3035982

<https://www.phoenixcontact.com/au/products/3035982>



4 mm test adapter, for terminal blocks with 5.2 mm and 6.2 mm pitch

UT 4-PE - Ground terminal

3044128

<https://www.phoenixcontact.com/au/products/3044128>



PAI-4-FIX-5/6 VT - Test adapter

3035979

<https://www.phoenixcontact.com/au/products/3035979>



4 mm test adapter, for terminal blocks with 5.2 mm and 6.2 mm pitch

PAI-4-FIX-5/6 BN - Test adapter

3035981

<https://www.phoenixcontact.com/au/products/3035981>



4 mm test adapter, for terminal blocks with 5.2 mm and 6.2 mm pitch

UT 4-PE - Ground terminal

3044128

<https://www.phoenixcontact.com/au/products/3044128>



PAI-4-FIX-5/6 WH - Test adapter

3035983

<https://www.phoenixcontact.com/au/products/3035983>



4 mm test adapter, for terminal blocks with 5.2 mm and 6.2 mm pitch

PS-6 - Test plugs

3030996

<https://www.phoenixcontact.com/au/products/3030996>



Test plugs, Modular test plug, color: red

UT 4-PE - Ground terminal

3044128

<https://www.phoenixcontact.com/au/products/3044128>



PS-6/2,3MM RD - Test plugs

3038736

<https://www.phoenixcontact.com/au/products/3038736>

Test plugs, color: red



CLIPFIX 35 - End clamp

3022218

<https://www.phoenixcontact.com/au/products/3022218>

Quick mounting end clamp for NS 35/7,5 DIN rail or NS 35/15 DIN rail, with marking option, width: 9.5 mm, color: gray



UT 4-PE - Ground terminal

3044128

<https://www.phoenixcontact.com/au/products/3044128>



CLIPFIX 35-5 - End clamp

3022276

<https://www.phoenixcontact.com/au/products/3022276>

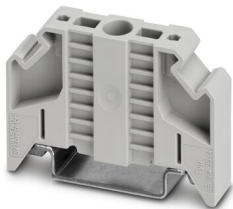


Quick mounting end clamp for NS 35/7,5 DIN rail or NS 35/15 DIN rail, with marking option, with parking option for FBS...5, FBS...6, KSS 5, KSS 6, width: 5.15 mm, color: gray

E/NS 35 N - End clamp

0800886

<https://www.phoenixcontact.com/au/products/0800886>



End clamp, width: 9.5 mm, color: gray

UT 4-PE - Ground terminal

3044128

<https://www.phoenixcontact.com/au/products/3044128>



PAI-4-N GY - Test adapter

3032871

<https://www.phoenixcontact.com/au/products/3032871>



4 mm test adapter, for terminal blocks with 5.2 mm, 6.2 mm and 8.2 mm pitch

Phoenix Contact 2023 © - all rights reserved

<https://www.phoenixcontact.com>

PHOENIX CONTACT PTY Ltd

Unit 7, 2-8 South Street

Rydalmere NSW 2116

1300 786 411

customerservice@phoenixcontact.com.au