

UTT 2,5-PE - Protective conductor double-level terminal block



3044665

<https://www.phoenixcontact.com/au/products/3044665>

Please be informed that the data shown in this PDF document is generated from our Online Catalog. Please find the complete data in the user documentation. Our General Terms of Use for Downloads are valid.



Protective conductor double-level terminal block, number of connections: 4, connection method: Screw connection, cross section: 0.14 mm² - 4 mm², mounting type: NS 35/7,5, NS 35/15, color: green-yellow

Your advantages

- Since there are two function shafts per level, all potential distribution tasks can be implemented quickly
- For a clear overview, each terminal point supports large-surface labeling
- As an option, the levels can be connected using the FBS-PV UT vertical bridge
- Tested for railway applications
- For example, two separate potentials can be routed side by side with the help of bridging between non-adjacent terminal blocks

Commercial Data

Item number	3044665
Packing unit	50 pc
Minimum order quantity	50 pc
Sales Key	BE1124
Product Key	BE1124
Catalog Page	Page 149 (C-1-2019)
GTIN	4017918997038
Weight per Piece (including packing)	20.36 g
Weight per Piece (excluding packing)	20.36 g
Customs tariff number	85369010
Country of origin	DE

UTT 2,5-PE - Protective conductor double-level terminal block



3044665

<https://www.phoenixcontact.com/au/products/3044665>

Technical Data

Notes

General

Note	When establishing a connection on the open housing side of a feed-through modular terminal block of the same series and size, the block must be provided with a cover if the expected insulation voltage is >320 V.
	The max. load current must not be exceeded by the total current of all connected conductors.

Product properties

Product type	Ground terminal block
Area of application	Railway industry
	Machine building
	Plant engineering
	Process industry
Number of connections	4
Number of rows	2

Insulation characteristics

Overvoltage category	III
Degree of pollution	3

Electrical properties

Rated surge voltage	6 kV
Maximum power dissipation for nominal condition	0.77 W

Connection data

Grounding foot	Yes
Number of connections per level	2
Nominal cross section	2.5 mm ²

Level 1+2

Screw thread	M3
Note	Please observe the current carrying capacity of the DIN rails.
Tightening torque	0.5 ... 0.6 Nm
Stripping length	9 mm
Internal cylindrical gage	A3
Connection in acc. with standard	IEC 60947-7-2
Conductor cross section rigid	0.14 mm ² ... 4 mm ²
Cross section AWG	26 ... 12 (converted acc. to IEC)
Conductor cross section flexible	0.14 mm ² ... 4 mm ²
Conductor cross section, flexible [AWG]	26 ... 12 (converted acc. to IEC)

UTTB 2,5-PE - Protective conductor double-level terminal block



3044665

<https://www.phoenixcontact.com/au/products/3044665>

Conductor cross-section flexible (ferrule without plastic sleeve)	0.14 mm ² ... 2.5 mm ²
Flexible conductor cross section (ferrule with plastic sleeve)	0.14 mm ² ... 2.5 mm ²

Ex data

Rated data (ATEX/IECEx)

Identification	⊕ II 2 GD Ex eb IIC Gb
Operating temperature range	-60 °C ... 110 °C
Ex-certified accessories	3047293 D-UTTBT 2,5/4 3047303 DP-UTTBT 2,5/4 1205053 SZS 0,6X3,5 3022276 CLIPFIX 35-5 3022218 CLIPFIX 35
output	(Permanent)

Ex connection data General

Torque range	0.5 Nm ... 0.6 Nm
Nominal cross section	2.5 mm ²
Rated cross section AWG	14
Connection capacity rigid	0.14 mm ² ... 4 mm ²
Connection capacity AWG	26 ... 12
Connection capacity flexible	0.14 mm ² ... 2.5 mm ²
Connection capacity AWG	26 ... 14

Dimensions

Width	5.2 mm
End cover width	2.2 mm
Height	69.9 mm
Height NS 35/15	72.5 mm
Height NS 35/7,5	65 mm
Depth	64.4 mm
Length	69.9 mm

Material specifications

Color	green-yellow
Flammability rating according to UL 94	V0
Insulating material group	I
Insulating material	PA
Static insulating material application in cold	-60 °C
Temperature index of insulation material (DIN EN 60216-1 (VDE 0304-21))	130 °C
Relative insulation material temperature index (Elec., UL 746 B)	130 °C
Fire protection for rail vehicles (DIN EN 45545-2) R22	HL 1 - HL 3
Fire protection for rail vehicles (DIN EN 45545-2) R23	HL 1 - HL 3

UTT 2,5-PE - Protective conductor double-level terminal block



3044665

<https://www.phoenixcontact.com/au/products/3044665>

Fire protection for rail vehicles (DIN EN 45545-2) R24	HL 1 - HL 3
Fire protection for rail vehicles (DIN EN 45545-2) R26	HL 1 - HL 3
Calorimetric heat release NFPA 130 (ASTM E 1354)	28 MJ/kg
Surface flammability NFPA 130 (ASTM E 162)	passed
Specific optical density of smoke NFPA 130 (ASTM E 662)	passed
Smoke gas toxicity NFPA 130 (SMP 800C)	passed

Mechanical properties

Mechanical data

Open side panel	Yes
-----------------	-----

Environmental and real-life conditions

Oscillation/broadband noise

Specification	DIN EN 50155 (VDE 0115-200):2018-05
Spectrum	Service life test category 2, bogie-mounted
Frequency	$f_1 = 5 \text{ Hz}$ to $f_2 = 250 \text{ Hz}$
ASD level	6.12 (m/s ²) ² /Hz
Acceleration	3.12g
Test duration per axis	5 h
Test directions	X-, Y- and Z-axis

Shocks

Specification	DIN EN 50155 (VDE 0115-200):2008-03
Pulse shape	Half-sine
Acceleration	30g
Shock duration	18 ms
Number of shocks per direction	3
Test directions	X-, Y- and Z-axis (pos. and neg.)

Ambient conditions

Ambient temperature (operation)	-60 °C ... 105 °C (max. short-term operating temperature RTI Elec.)
Ambient temperature (storage/transport)	-25 °C ... 60 °C (for a short time, not exceeding 24 h, -60 °C to +70 °C)
Ambient temperature (assembly)	-5 °C ... 70 °C
Ambient temperature (actuation)	-5 °C ... 70 °C
Permissible humidity (storage/transport)	30 % ... 70 %

Standards and regulations

Connection in acc. with standard	IEC 60947-7-2
----------------------------------	---------------

Mounting

Mounting type	NS 35/7,5
	NS 35/15

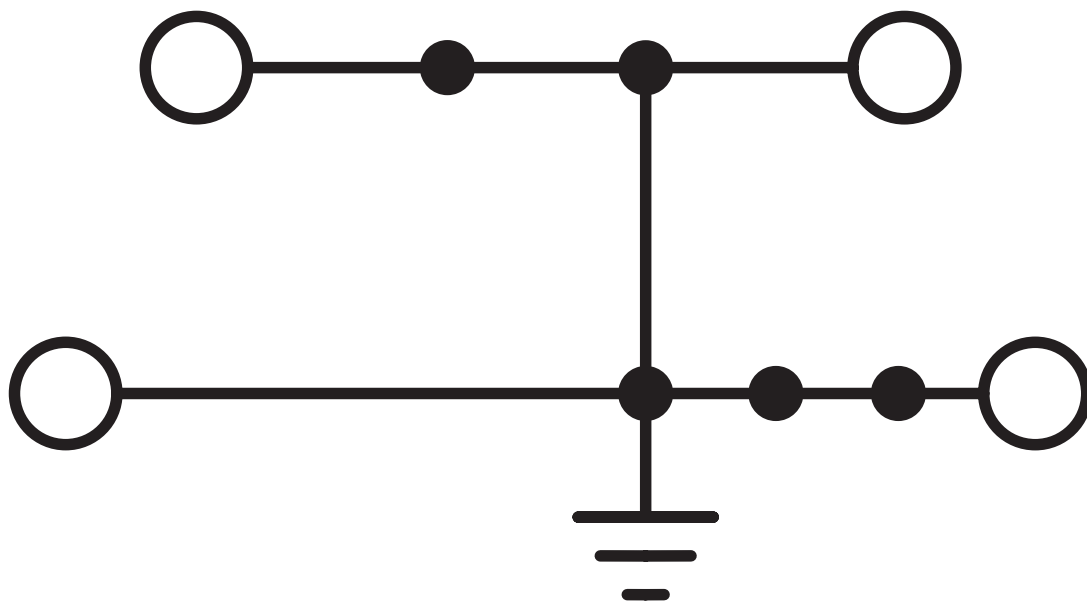
UTT 2,5-PE - Protective conductor double-level terminal block

3044665

<https://www.phoenixcontact.com/au/products/3044665>

Drawings

Circuit diagram



UTT 2,5-PE - Protective conductor double-level terminal block





3044665


<https://www.phoenixcontact.com/au/products/3044665>

Approvals


To download certificates, visit the product detail page: <https://www.phoenixcontact.com/au/products/3044665>


 CSA Approval ID: 13631				
	Nominal Voltage U_N	Nominal Current I_N	Cross Section AWG	Cross Section mm^2
	-	-	26 - 12	-

 EAC Approval ID: RU C-DE.BL08.B.00534				
---	--	--	--	--

 cULus Recognized Approval ID: E60425				
	Nominal Voltage U_N	Nominal Current I_N	Cross Section AWG	Cross Section mm^2
Use group B	-	-	26 - 12	-
Use group C	-	-	26 - 12	-
Use group D	-	-	26 - 12	-

 RS Approval ID: 22.44.01.00083.250				
--	--	--	--	--

 ATEX Approval ID: KEMA06ATEX0017U				
---	--	--	--	--

 cUL Recognized Approval ID: E192998				
	Nominal Voltage U_N	Nominal Current I_N	Cross Section AWG	Cross Section mm^2
Use group B	-	-	26 - 12	-
Use group C	-	-	26 - 12	-
Use group D	-	-	26 - 12	-

UTT 2,5-PE - Protective conductor double-level terminal block



3044665

<https://www.phoenixcontact.com/au/products/3044665>



EAC Ex

Approval ID: RU C-DE.HA91.B.00066



IEC Ex

Approval ID: IECEx KEM 06.0013U



UL Recognized

Approval ID: E192998

	Nominal Voltage U_N	Nominal Current I_N	Cross Section AWG	Cross Section mm^2
Use group B	-	-	26 - 12	-
Use group C	-	-	26 - 12	-
Use group D	-	-	26 - 12	-



CCC

Approval ID: 2020322313000622



UKCA-EX

Approval ID: DEKRA 21UKEX0305U

UTT 2,5-PE - Protective conductor double-level terminal block



3044665

<https://www.phoenixcontact.com/au/products/3044665>

Classifications

ECLASS

ECLASS-11.0	27141141
ECLASS-13.0	27250104

ETIM

ETIM 8.0	EC000901
----------	----------

UNSPSC

UNSPSC 21.0	39121400
-------------	----------

UTT 2,5-PE - Protective conductor double-level terminal block



3044665

<https://www.phoenixcontact.com/au/products/3044665>

Environmental Product Compliance

REACH SVHC	Lead 7439-92-1
China RoHS	Environmentally Friendly Use Period = 50 years
	For information on hazardous substances, refer to the manufacturer's declaration available under "Downloads"

UTT 2,5-PE - Protective conductor double-level terminal block

3044665

<https://www.phoenixcontact.com/au/products/3044665>

Accessories

FBS 2-5 - Plug-in bridge

3030161

<https://www.phoenixcontact.com/au/products/3030161>



Plug-in bridge, pitch: 5.2 mm, number of positions: 2, length: 23 mm, color: red

FBS 3-5 - Plug-in bridge

3030174

<https://www.phoenixcontact.com/au/products/3030174>



Plug-in bridge, pitch: 5.2 mm, number of positions: 3, length: 23 mm, color: red

UTT 2,5-PE - Protective conductor double-level terminal block

3044665

<https://www.phoenixcontact.com/au/products/3044665>

FBS 4-5 - Plug-in bridge

3030187

<https://www.phoenixcontact.com/au/products/3030187>

Plug-in bridge, pitch: 5.2 mm, number of positions: 4, length: 23 mm, color: red



FBS 5-5 - Plug-in bridge

3030190

<https://www.phoenixcontact.com/au/products/3030190>

Plug-in bridge, pitch: 5.2 mm, number of positions: 5, length: 23 mm, color: red



UTTB 2,5-PE - Protective conductor double-level terminal block

3044665

<https://www.phoenixcontact.com/au/products/3044665>

FBS 10-5 - Plug-in bridge

3030213

<https://www.phoenixcontact.com/au/products/3030213>

Plug-in bridge, pitch: 5.2 mm, number of positions: 10, length: 23 mm, color: red



FBS 20-5 - Plug-in bridge

3030226

<https://www.phoenixcontact.com/au/products/3030226>

Plug-in bridge, pitch: 5.2 mm, number of positions: 20, color: red



UTTB 2,5-PE - Protective conductor double-level terminal block

3044665

<https://www.phoenixcontact.com/au/products/3044665>

FBS 50-5 - Plug-in bridge

3038930

<https://www.phoenixcontact.com/au/products/3038930>

Plug-in bridge, pitch: 5.2 mm, number of positions: 50, color: red



FBS 2-5 BU - Plug-in bridge

3036877

<https://www.phoenixcontact.com/au/products/3036877>

Plug-in bridge, pitch: 5.2 mm, number of positions: 2, color: blue



UTT 2,5-PE - Protective conductor double-level terminal block

3044665

<https://www.phoenixcontact.com/au/products/3044665>

FBS 3-5 BU - Plug-in bridge

3036880

<https://www.phoenixcontact.com/au/products/3036880>



Plug-in bridge, pitch: 5.2 mm, number of positions: 3, color: blue

FBS 4-5 BU - Plug-in bridge

3036893

<https://www.phoenixcontact.com/au/products/3036893>



Plug-in bridge, pitch: 5.2 mm, number of positions: 4, color: blue

UTT 2,5-PE - Protective conductor double-level terminal block

3044665

<https://www.phoenixcontact.com/au/products/3044665>

FBS 5-5 BU - Plug-in bridge

3036903

<https://www.phoenixcontact.com/au/products/3036903>

Plug-in bridge, pitch: 5.2 mm, number of positions: 5, color: blue



FBS 10-5 BU - Plug-in bridge

3036916

<https://www.phoenixcontact.com/au/products/3036916>

Plug-in bridge, pitch: 5.2 mm, number of positions: 10, color: blue



UTT 2,5-PE - Protective conductor double-level terminal block

3044665

<https://www.phoenixcontact.com/au/products/3044665>

FBS 20-5 BU - Plug-in bridge

3036929

<https://www.phoenixcontact.com/au/products/3036929>

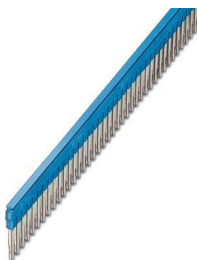


Plug-in bridge, pitch: 5.2 mm, number of positions: 20, color: blue

FBS 50-5 BU - Plug-in bridge

3032114

<https://www.phoenixcontact.com/au/products/3032114>



Plug-in bridge, pitch: 5.2 mm, number of positions: 50, color: blue

UTTB 2,5-PE - Protective conductor double-level terminal block

3044665

<https://www.phoenixcontact.com/au/products/3044665>

D-UTTB 2,5/4 - End cover

3047293

<https://www.phoenixcontact.com/au/products/3047293>

End cover, length: 69.9 mm, width: 2.2 mm, height: 57.5 mm, color: gray



DP-UTTB 2,5/4 - Spacer plate

3047303

<https://www.phoenixcontact.com/au/products/3047303>

Spacer plate, length: 69.9 mm, width: 2.6 mm, height: 33 mm, color: gray



UTTB 2,5-PE - Protective conductor double-level terminal block

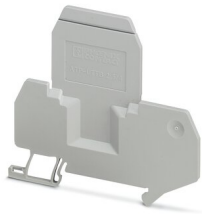
3044665

<https://www.phoenixcontact.com/au/products/3044665>

ATP-UTTB 2,5/4 - Partition plate

3047316

<https://www.phoenixcontact.com/au/products/3047316>



Partition plate, length: 74.3 mm, width: 2.2 mm, height: 70 mm, color: gray

SZS 0,6X3,5 - Screwdriver

1205053

<https://www.phoenixcontact.com/au/products/1205053>



Actuation tool, for ST terminal blocks, insulated, also suitable for use as a bladed screwdriver, size: 0.6 x 3.5 x 100 mm, 2-component grip, with non-slip grip

UTTB 2,5-PE - Protective conductor double-level terminal block

3044665

<https://www.phoenixcontact.com/au/products/3044665>

X-PEN 0,35 - Marker pen

0811228

<https://www.phoenixcontact.com/au/products/0811228>



Marker pen without ink cartridge, for manual labeling of markers, labeling extremely wipe-proof, line thickness 0.35 mm

SF-SL 0,6X3,5-100 S-VDE - Screwdriver

1212587

<https://www.phoenixcontact.com/au/products/1212587>



Actuation tool, for ST terminal blocks, VDE insulated, with slimmer insulation integrated in the blade, also suitable for use as a bladed screwdriver, size: 0.6 x 3.5 x 100 mm, 2-component grip, with non-slip grip

UTTB 2,5-PE - Protective conductor double-level terminal block

3044665

<https://www.phoenixcontact.com/au/products/3044665>

NS 35/ 7,5 PERF 2000MM - DIN rail perforated

0801733

<https://www.phoenixcontact.com/au/products/0801733>



DIN rail perforated, acc. to EN 60715, material: Steel, galvanized, passivated with a thick layer, Standard profile, color: silver, Pack of 25 (50 m)

NS 35/ 7,5 UNPERF 2000MM - DIN rail, unperforated

0801681

<https://www.phoenixcontact.com/au/products/0801681>



DIN rail, unperforated, acc. to EN 60715, material: Steel, galvanized, passivated with a thick layer, Standard profile, color: silver, Pack of 25 (50 m)

UTTB 2,5-PE - Protective conductor double-level terminal block

3044665

<https://www.phoenixcontact.com/au/products/3044665>

NS 35/ 7,5 WH PERF 2000MM - DIN rail perforated

1204119

<https://www.phoenixcontact.com/au/products/1204119>



DIN rail perforated, acc. to EN 60715, material: Steel, Galvanized, white passivated, Standard profile, color: silver, Pack of 25 (50 m)

NS 35/ 7,5 WH UNPERF 2000MM-VPE 10 - DIN rail, unperforated

1204122

<https://www.phoenixcontact.com/au/products/1204122>



DIN rail, unperforated, acc. to EN 60715, material: Steel, Galvanized, white passivated, Standard profile, color: silver, Pack of 10 (20 m)

UTTB 2,5-PE - Protective conductor double-level terminal block

3044665

<https://www.phoenixcontact.com/au/products/3044665>

NS 35/ 7,5 AL UNPERF 2000MM - DIN rail, unperforated

0801704

<https://www.phoenixcontact.com/au/products/0801704>



DIN rail, unperforated, acc. to EN 60715, material: Aluminum, uncoated, Standard profile, color: silver, Pack of 25 (50 m)

NS 35/ 7,5 ZN PERF 2000MM - DIN rail perforated

1206421

<https://www.phoenixcontact.com/au/products/1206421>



DIN rail perforated, acc. to EN 60715, material: Steel, galvanized, Standard profile, color: silver, Pack of 25 (50 m)

UTTB 2,5-PE - Protective conductor double-level terminal block

3044665

<https://www.phoenixcontact.com/au/products/3044665>

NS 35/ 7,5 ZN UNPERF 2000MM - DIN rail, unperforated

1206434

<https://www.phoenixcontact.com/au/products/1206434>



DIN rail, unperforated, acc. to EN 60715, material: Steel, galvanized, Standard profile, color: silver, Pack of 25 (50 m)

NS 35/ 7,5 CU UNPERF 2000MM-VPE 10 - DIN rail, unperforated

0801762

<https://www.phoenixcontact.com/au/products/0801762>



DIN rail, unperforated, acc. to EN 60715, material: Copper, uncoated, Standard profile, color: copper-colored, Pack of 10 (20 m)

UTTB 2,5-PE - Protective conductor double-level terminal block

3044665

<https://www.phoenixcontact.com/au/products/3044665>

NS 35/ 7,5 CAP - End cap

1206560

<https://www.phoenixcontact.com/au/products/1206560>

DIN rail end piece, for DIN rail NS 35/7.5



ZB 5 :UNBEDRUCKT - Zack marker strip

1050004

<https://www.phoenixcontact.com/au/products/1050004>



Zack marker strip, Strip, white, unlabeled, can be labeled with: PLOTMARK, CMS-P1-PLOTTER, mounting type: snapped, for terminal block width: 5.2 mm, lettering field size: 5.1 x 10.5 mm, Number of individual labels: 10

UTTB 2,5-PE - Protective conductor double-level terminal block

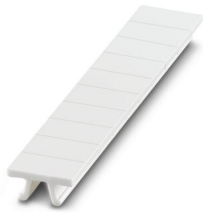
3044665

<https://www.phoenixcontact.com/au/products/3044665>

ZB 5 CUS - Zack marker strip

0824962

<https://www.phoenixcontact.com/au/products/0824962>



Zack marker strip, can be ordered: Strip, white, labeled according to customer specifications, mounting type: snap into tall marker groove, for terminal block width: 5.2 mm, lettering field size: 5.15 x 10.5 mm, Number of individual labels: 10

ZB 5,LGS:FORTL.ZAHLEN - Zack marker strip

1050017

<https://www.phoenixcontact.com/au/products/1050017>



Zack marker strip, Strip, white, labeled, printed horizontally: consecutive numbers 1 ... 10, 11 ... 20, etc. up to 491 ... 500, mounting type: snapped, for terminal block width: 5.2 mm, lettering field size: 5.15 x 10.5 mm, Number of individual labels: 10

UTT 2,5-PE - Protective conductor double-level terminal block

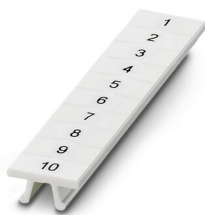
3044665

<https://www.phoenixcontact.com/au/products/3044665>

ZB 5,QR:FORTL.ZAHLEN - Zack marker strip

1050020

<https://www.phoenixcontact.com/au/products/1050020>



Zack marker strip, white, Printed vertically: consecutive numbers 1 ... 10, 11 ... 20, etc. up to 491 ... 500, mounting type: snapped, for terminal block width: 5.2 mm, lettering field size: 5.15 x 10.5 mm

ZB 5,LGS:GLEICHE ZAHLEN - Zack marker strip

1050033

<https://www.phoenixcontact.com/au/products/1050033>



Zack marker strip, Strip, white, labeled, can be labeled with: CMS-P1-PLOTTER, printed horizontally: Identical numbers 1 or 2, etc. up to 100, mounting type: snapped, for terminal block width: 5.2 mm, lettering field size: 5.15 x 10.5 mm, Number of individual labels: 10

UTT 2,5-PE - Protective conductor double-level terminal block



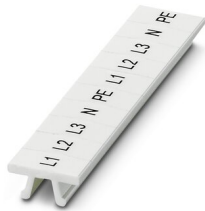
3044665

<https://www.phoenixcontact.com/au/products/3044665>

ZB 5,LGS:L1-N,PE - Zack marker strip

1050415

<https://www.phoenixcontact.com/au/products/1050415>



Zack marker strip, Strip, white, labeled, horizontal: L1, L2, L3, N, PE, L1, L2, L3, N, PE, mounting type: snapped, for terminal block width: 5.2 mm, lettering field size: 5.15 x 10.5 mm, Number of individual labels: 10

UC-TM 5 - Marker for terminal blocks

0818108

<https://www.phoenixcontact.com/au/products/0818108>



Marker for terminal blocks, Sheet, white, unlabeled, can be labeled with: BLUEMARK ID COLOR, BLUEMARK ID, BLUEMARK CLED, PLOTMARK, CMS-P1-PLOTTER, mounting type: snapped, for terminal block width: 5.2 mm, lettering field size: 4.6 x 10.5 mm, Number of individual labels: 96

UTT 2,5-PE - Protective conductor double-level terminal block

3044665

<https://www.phoenixcontact.com/au/products/3044665>

UC-TM 5 CUS - Marker for terminal blocks

0824581

<https://www.phoenixcontact.com/au/products/0824581>



Marker for terminal blocks, can be ordered: by sheet, white, labeled according to customer specifications, mounting type: snap into tall marker groove, for terminal block width: 5.2 mm, lettering field size: 10.5 x 4.6 mm, Number of individual labels: 96

UCT-TM 5 - Marker for terminal blocks

0828734

<https://www.phoenixcontact.com/au/products/0828734>



Marker for terminal blocks, Sheet, white, unlabeled, can be labeled with: TOPMARK NEO, TOPMARK LASER, BLUEMARK ID COLOR, BLUEMARK ID, BLUEMARK CLED, THERMOMARK PRIME, THERMOMARK CARD 2.0, THERMOMARK CARD, mounting type: snapped, for terminal block width: 5.2 mm, lettering field size: 4.6 x 10.5 mm, Number of individual labels: 72

UTTB 2,5-PE - Protective conductor double-level terminal block

3044665

<https://www.phoenixcontact.com/au/products/3044665>

UCT-TM 5 CUS - Marker for terminal blocks

0829595

<https://www.phoenixcontact.com/au/products/0829595>



Marker for terminal blocks, can be ordered: by sheet, white, labeled according to customer specifications, mounting type: snap into tall marker groove, for terminal block width: 5.2 mm, lettering field size: 4.6 x 10.5 mm, Number of individual labels: 72

GBS 5-25X12 - Group marker label for terminal marking

0810588

<https://www.phoenixcontact.com/au/products/0810588>



Group marker label, snaps onto terminal center for screw, spring-cage and quick connection terminal blocks, labeled with a 25 x 12 mm label or manually with the B-STIFT, in the foot part with ZB 5

UTT 2,5-PE - Protective conductor double-level terminal block

3044665

<https://www.phoenixcontact.com/au/products/3044665>

GBS 5-25X5 - Group marker label for terminal marking

0829126

<https://www.phoenixcontact.com/au/products/0829126>



Group marking label, can be snapped into terminal center for screw, spring-cage, push-in, and fast connection terminal blocks, can be labeled with a 24 x 4 mm label or manually using B-STIFT, in the foot part with ZB 5

STP 5-2-ZB - Marker carriers

3037643

<https://www.phoenixcontact.com/au/products/3037643>



Marker carriers, snaps into ST 2,5 spring-cage terminal blocks, can be marked with UC-TM 5, UC-TMF 5, UCT-TM 5, UCT-TMF 5, ZB 5, or ZBF 5, gray, unlabeled, mounting type: plug in

UTT2B 2,5-PE - Protective conductor double-level terminal block

3044665

<https://www.phoenixcontact.com/au/products/3044665>

MPS-MT - Test plugs

0201744

<https://www.phoenixcontact.com/au/products/0201744>



Test plugs, with solder connection up to 1 mm² conductor cross section, number of positions: 1, color: gray

MPS-IH WH - Insulating sleeve

0201663

<https://www.phoenixcontact.com/au/products/0201663>

Insulating sleeve, color: white



UTT 2,5-PE - Protective conductor double-level terminal block

3044665

<https://www.phoenixcontact.com/au/products/3044665>

MPS-IH RD - Insulating sleeve

0201676

<https://www.phoenixcontact.com/au/products/0201676>

Insulating sleeve, color: red

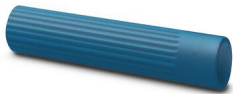


MPS-IH BU - Insulating sleeve

0201689

<https://www.phoenixcontact.com/au/products/0201689>

Insulating sleeve, color: blue



UTT 2,5-PE - Protective conductor double-level terminal block

3044665

<https://www.phoenixcontact.com/au/products/3044665>

MPS-IH YE - Insulating sleeve

0201692

<https://www.phoenixcontact.com/au/products/0201692>

Insulating sleeve, color: yellow



MPS-IH GN - Insulating sleeve

0201702

<https://www.phoenixcontact.com/au/products/0201702>

Insulating sleeve, color: green



UTT 2,5-PE - Protective conductor double-level terminal block

3044665

<https://www.phoenixcontact.com/au/products/3044665>

MPS-IH GY - Insulating sleeve

0201728

<https://www.phoenixcontact.com/au/products/0201728>

Insulating sleeve, color: gray



MPS-IH BK - Insulating sleeve

0201731

<https://www.phoenixcontact.com/au/products/0201731>

Insulating sleeve, color: black



UTT2B 2,5-PE - Protective conductor double-level terminal block

3044665

<https://www.phoenixcontact.com/au/products/3044665>

PAI-4-FIX-5/6 BU - Test adapter

3035975

<https://www.phoenixcontact.com/au/products/3035975>



4 mm test adapter, for terminal blocks with 5.2 mm and 6.2 mm pitch

PAI-4-FIX-5/6 OG - Test adapter

3035974

<https://www.phoenixcontact.com/au/products/3035974>



4 mm test adapter, for terminal blocks with 5.2 mm and 6.2 mm pitch

UTT 2,5-PE - Protective conductor double-level terminal block

3044665

<https://www.phoenixcontact.com/au/products/3044665>

PAI-4-FIX-5/6 YE - Test adapter

3035977

<https://www.phoenixcontact.com/au/products/3035977>



4 mm test adapter, for terminal blocks with 5.2 mm and 6.2 mm pitch

PAI-4-FIX-5/6 RD - Test adapter

3035976

<https://www.phoenixcontact.com/au/products/3035976>



4 mm test adapter, for terminal blocks with 5.2 mm and 6.2 mm pitch

UTT 2,5-PE - Protective conductor double-level terminal block

3044665

<https://www.phoenixcontact.com/au/products/3044665>

PAI-4-FIX-5/6 GN - Test adapter

3035978

<https://www.phoenixcontact.com/au/products/3035978>



4 mm test adapter, for terminal blocks with 5.2 mm and 6.2 mm pitch

PAI-4-FIX-5/6 BK - Test adapter

3035980

<https://www.phoenixcontact.com/au/products/3035980>



4 mm test adapter, for terminal blocks with 5.2 mm and 6.2 mm pitch

UTT2B 2,5-PE - Protective conductor double-level terminal block

3044665

<https://www.phoenixcontact.com/au/products/3044665>

PAI-4-FIX-5/6 GY - Test adapter

3035982

<https://www.phoenixcontact.com/au/products/3035982>



4 mm test adapter, for terminal blocks with 5.2 mm and 6.2 mm pitch

PAI-4-FIX-5/6 VT - Test adapter

3035979

<https://www.phoenixcontact.com/au/products/3035979>



4 mm test adapter, for terminal blocks with 5.2 mm and 6.2 mm pitch

UTT 2,5-PE - Protective conductor double-level terminal block

3044665

<https://www.phoenixcontact.com/au/products/3044665>

PAI-4-FIX-5/6 BN - Test adapter

3035981

<https://www.phoenixcontact.com/au/products/3035981>



4 mm test adapter, for terminal blocks with 5.2 mm and 6.2 mm pitch

PAI-4-FIX-5/6 WH - Test adapter

3035983

<https://www.phoenixcontact.com/au/products/3035983>



4 mm test adapter, for terminal blocks with 5.2 mm and 6.2 mm pitch

UTT 2,5-PE - Protective conductor double-level terminal block

3044665

<https://www.phoenixcontact.com/au/products/3044665>

PS-5 - Test plugs

3030983

<https://www.phoenixcontact.com/au/products/3030983>

Test plugs, Modular test plug, number of positions: 1, color: red



DP PS-5 - Spacer plate

3036725

<https://www.phoenixcontact.com/au/products/3036725>

Spacer plate, length: 22.4 mm, width: 5.2 mm, height: 29 mm, number of positions: 1, color: red



UTT2B 2,5-PE - Protective conductor double-level terminal block

3044665

<https://www.phoenixcontact.com/au/products/3044665>

PS-5/2,3MM RD - Test plugs

3038723

<https://www.phoenixcontact.com/au/products/3038723>

Test plugs, number of positions: 1, color: red



CLIPFIX 35 - End clamp

3022218

<https://www.phoenixcontact.com/au/products/3022218>

Quick mounting end clamp for NS 35/7,5 DIN rail or NS 35/15 DIN rail, with marking option, width: 9.5 mm, color: gray



UTT 2,5-PE - Protective conductor double-level terminal block

3044665

<https://www.phoenixcontact.com/au/products/3044665>

CLIPFIX 35-5 - End clamp

3022276

<https://www.phoenixcontact.com/au/products/3022276>

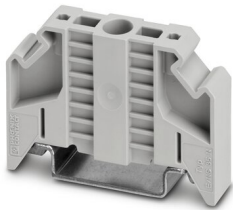


Quick mounting end clamp for NS 35/7,5 DIN rail or NS 35/15 DIN rail, with marking option, with parking option for FBS...5, FBS...6, KSS 5, KSS 6, width: 5.15 mm, color: gray

E/NS 35 N - End clamp

0800886

<https://www.phoenixcontact.com/au/products/0800886>



End clamp, width: 9.5 mm, color: gray

Phoenix Contact 2023 © - all rights reserved

<https://www.phoenixcontact.com>

PHOENIX CONTACT PTY Ltd

Unit 7, 2-8 South Street

Rydalmere NSW 2116

1300 786 411

customerservice@phoenixcontact.com.au