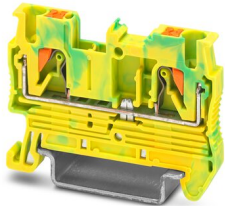


PT 2,5-PE - Ground terminal

3209536

<https://www.phoenixcontact.com/au/products/3209536>

Please be informed that the data shown in this PDF document is generated from our Online Catalog. Please find the complete data in the user documentation. Our General Terms of Use for Downloads are valid.



Ground terminal, number of connections: 2, connection method: Push-in connection, cross section: 0.14 mm² - 4 mm², mounting type: NS 35/7,5, NS 35/15, color: green-yellow

Your advantages

- The Push-in connection terminal blocks are characterized by the system features of the CLIPLINE complete system and by easy and tool-free wiring of conductors with ferrules or solid conductors
- The compact design and front connection enable wiring in a confined space
- In addition to the testing facility in the double function shaft, all terminal blocks provide an additional test connection
- Tested for railway applications

Commercial Data

Item number	3209536
Packing unit	50 pc
Minimum order quantity	50 pc
Sales Key	BE2221
Product Key	BE2221
Catalog Page	Page 71 (C-1-2019)
GTIN	4046356329804
Weight per Piece (including packing)	9.9 g
Weight per Piece (excluding packing)	9.341 g
Customs tariff number	85369010
Country of origin	CN

PT 2,5-PE - Ground terminal



3209536

<https://www.phoenixcontact.com/au/products/3209536>

Technical Data

Product properties

Product type	Ground terminal block
Area of application	Railway industry
	Machine building
	Plant engineering
	Process industry
Number of connections	2
Number of rows	1

Insulation characteristics

Overvoltage category	III
Degree of pollution	3

Electrical properties

Rated surge voltage	6 kV
Maximum power dissipation for nominal condition	0.77 W

Connection data

Grounding foot	Yes
Number of connections per level	2
Nominal cross section	2.5 mm ²
Note	Please observe the current carrying capacity of the DIN rails.
Stripping length	8 mm ... 10 mm
Internal cylindrical gage	A3
Connection in acc. with standard	IEC 60947-7-2
Conductor cross section rigid	0.14 mm ² ... 4 mm ²
Cross section AWG	26 ... 12 (converted acc. to IEC)
Conductor cross section flexible	0.14 mm ² ... 4 mm ²
Conductor cross section, flexible [AWG]	26 ... 12 (converted acc. to IEC)
Conductor cross-section flexible (ferrule without plastic sleeve)	0.14 mm ² ... 2.5 mm ²
Flexible conductor cross section (ferrule with plastic sleeve)	0.14 mm ² ... 2.5 mm ²

Connection cross sections directly pluggable

Conductor cross section rigid	0.34 mm ² ... 4 mm ²
Conductor cross-section flexible (ferrule without plastic sleeve)	0.5 mm ² ... 2.5 mm ²
Flexible conductor cross section (ferrule with plastic sleeve)	0.34 mm ² ... 2.5 mm ²

Ex data

Rated data (ATEX/IECEX)

Identification	Ⓔ II 2 G Ex eb IIC Gb
Operating temperature range	-60 °C ... 110 °C
	3030417 D-ST 2,5

PT 2,5-PE - Ground terminal



3209536

<https://www.phoenixcontact.com/au/products/3209536>

Ex-certified accessories	1204517 SZF 1-0,6X3,5
	3022276 CLIPFIX 35-5
	3022218 CLIPFIX 35
output	(Permanent)

Ex connection data General

Nominal cross section	2.5 mm ²
Rated cross section AWG	14
Connection capacity rigid	0.14 mm ² ... 4 mm ²
Connection capacity AWG	26 ... 12
Connection capacity flexible	0.14 mm ² ... 2.5 mm ²
Connection capacity AWG	26 ... 14

Dimensions

Width	5.2 mm
End cover width	2.2 mm
Height	48.5 mm
Height NS 35/15	44 mm
Height NS 35/7,5	36.5 mm
Height	1.437 "
Depth	35.3 mm
Length	48.5 mm

Material specifications

Color	green-yellow
Flammability rating according to UL 94	V0
Insulating material group	I
Insulating material	PA
Static insulating material application in cold	-60 °C
Relative insulation material temperature index (Elec., UL 746 B)	130 °C
Fire protection for rail vehicles (DIN EN 45545-2) R22	HL 1 - HL 3
Fire protection for rail vehicles (DIN EN 45545-2) R23	HL 1 - HL 3
Fire protection for rail vehicles (DIN EN 45545-2) R24	HL 1 - HL 3
Fire protection for rail vehicles (DIN EN 45545-2) R26	HL 1 - HL 3
Surface flammability NFPA 130 (ASTM E 162)	passed
Specific optical density of smoke NFPA 130 (ASTM E 662)	passed
Smoke gas toxicity NFPA 130 (SMP 800C)	passed

Mechanical properties

Mechanical data

Open side panel	Yes
-----------------	-----

Environmental and real-life conditions

Oscillation/broadband noise

PT 2,5-PE - Ground terminal



3209536

<https://www.phoenixcontact.com/au/products/3209536>

Specification	DIN EN 50155 (VDE 0115-200):2008-03
Spectrum	Service life test category 2, bogie-mounted
Frequency	$f_1 = 5 \text{ Hz}$ to $f_2 = 250 \text{ Hz}$
ASD level	6.12 (m/s ²) ² /Hz
Acceleration	3.12g
Test duration per axis	5 h
Test directions	X-, Y- and Z-axis
Result	Test passed

Shocks

Specification	DIN EN 50155 (VDE 0115-200):2008-03
Pulse shape	Half-sine
Acceleration	30g
Shock duration	18 ms
Number of shocks per direction	3
Test directions	X-, Y- and Z-axis (pos. and neg.)
Result	Test passed

Ambient conditions

Ambient temperature (operation)	-60 °C ... 105 °C (max. short-term operating temperature RTI Elec.)
Ambient temperature (storage/transport)	-25 °C ... 60 °C (for a short time, not exceeding 24 h, -60 °C to +70 °C)
Ambient temperature (assembly)	-5 °C ... 70 °C
Ambient temperature (actuation)	-5 °C ... 70 °C
Permissible humidity (storage/transport)	30 % ... 70 %

Standards and regulations

Connection in acc. with standard	IEC 60947-7-2
----------------------------------	---------------

Mounting

Mounting type	NS 35/7,5
	NS 35/15

PT 2,5-PE - Ground terminal

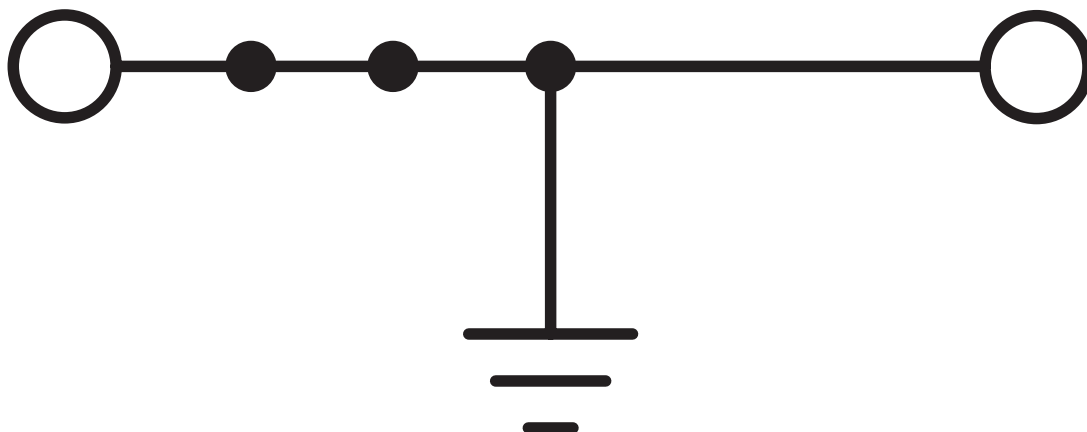
3209536

<https://www.phoenixcontact.com/au/products/3209536>



Drawings

Circuit diagram



PT 2,5-PE - Ground terminal




3209536


<https://www.phoenixcontact.com/au/products/3209536>


Approvals


To download certificates, visit the product detail page: <https://www.phoenixcontact.com/au/products/3209536>

 CSA Approval ID: 13631	Nominal Voltage U_N	Nominal Current I_N	Cross Section AWG	Cross Section mm^2
	-	-	26 - 12	-


 IECEE CB Scheme Approval ID: DE1-62994	Nominal Voltage U_N	Nominal Current I_N	Cross Section AWG	Cross Section mm^2
	-	-	-	0.2 - 2.5

 EAC Approval ID: RU C-DE.AI30.B.01102
--

 cULus Recognized Approval ID: E60425
--


 LR Approval ID: LR2371832TA

 NK Approval ID: 22ME0007
--

 RS Approval ID: 22.44.01.00083.250
--

 BV Approval ID: 25278/C1 BV

 EAC Approval ID: RU C-DE.BL08.B.00644

 VDE Zeichengenehmigung Approval ID: 40036433	Nominal Voltage U_N	Nominal Current I_N	Cross Section AWG	Cross Section mm^2
--	-----------------------	-----------------------	-------------------	----------------------

PT 2,5-PE - Ground terminal



3209536

<https://www.phoenixcontact.com/au/products/3209536>

-	-	-	0.2 - 2.5
---	---	---	-----------

ClassNK NK
Approval ID: 14ME0912

UL LR
Approval ID: 14/20056

cULus cULus Recognized
Approval ID: E60425

cUL cUL Recognized
Approval ID: FILE E 192998

	Nominal Voltage U_N	Nominal Current I_N	Cross Section AWG	Cross Section mm^2
	-	-	26 - 12	-

EAC Ex EAC Ex
Approval ID: RU C-DE.AB72.B.02351

IECEX IECEX
Approval ID: IECEXPTB10.0021U

	Nominal Voltage U_N	Nominal Current I_N	Cross Section AWG	Cross Section mm^2
Only flexible conductors	-	-	-	0.14 - 2.5
Only rigid conductors	-	-	-	0.14 - 4

UL UL Recognized
Approval ID: E192998

	Nominal Voltage U_N	Nominal Current I_N	Cross Section AWG	Cross Section mm^2
	-	-	26 - 12	-

ATEX ATEX
Approval ID: PTB09ATEX1111U

	Nominal Voltage U_N	Nominal Current I_N	Cross Section AWG	Cross Section mm^2
Only flexible conductors	-	-	-	0.14 - 2.5
Only rigid conductors	-	-	-	0.14 - 4

PT 2,5-PE - Ground terminal



3209536

<https://www.phoenixcontact.com/au/products/3209536>



CCC

Approval ID: 2020322313000631



UKCA-EX

Approval ID: CSAE 22UKEX1096U

PT 2,5-PE - Ground terminal



3209536

<https://www.phoenixcontact.com/au/products/3209536>

Classifications

ECLASS

ECLASS-11.0	27141141
ECLASS-13.0	27250103

ETIM

ETIM 8.0	EC000901
----------	----------

UNSPSC

UNSPSC 21.0	39121400
-------------	----------

PT 2,5-PE - Ground terminal



3209536

<https://www.phoenixcontact.com/au/products/3209536>

Environmental Product Compliance

China RoHS	Environmentally friendly use period: unlimited = EFUP-e
	No hazardous substances above threshold values

PT 2,5-PE - Ground terminal

3209536

<https://www.phoenixcontact.com/au/products/3209536>



Accessories

FBS 2-5 - Plug-in bridge

3030161

<https://www.phoenixcontact.com/au/products/3030161>



Plug-in bridge, pitch: 5.2 mm, number of positions: 2, length: 23 mm, color: red

FBS 3-5 - Plug-in bridge

3030174

<https://www.phoenixcontact.com/au/products/3030174>



Plug-in bridge, pitch: 5.2 mm, number of positions: 3, length: 23 mm, color: red

PT 2,5-PE - Ground terminal

3209536

<https://www.phoenixcontact.com/au/products/3209536>



FBS 4-5 - Plug-in bridge

3030187

<https://www.phoenixcontact.com/au/products/3030187>



Plug-in bridge, pitch: 5.2 mm, number of positions: 4, length: 23 mm, color: red

FBS 5-5 - Plug-in bridge

3030190

<https://www.phoenixcontact.com/au/products/3030190>



Plug-in bridge, pitch: 5.2 mm, number of positions: 5, length: 23 mm, color: red

PT 2,5-PE - Ground terminal

3209536

<https://www.phoenixcontact.com/au/products/3209536>



FBS 10-5 - Plug-in bridge

3030213

<https://www.phoenixcontact.com/au/products/3030213>



Plug-in bridge, pitch: 5.2 mm, number of positions: 10, length: 23 mm, color: red

FBS 20-5 - Plug-in bridge

3030226

<https://www.phoenixcontact.com/au/products/3030226>



Plug-in bridge, pitch: 5.2 mm, number of positions: 20, color: red

PT 2,5-PE - Ground terminal

3209536

<https://www.phoenixcontact.com/au/products/3209536>



FBS 50-5 - Plug-in bridge

3038930

<https://www.phoenixcontact.com/au/products/3038930>



Plug-in bridge, pitch: 5.2 mm, number of positions: 50, color: red

FBSR 2-5 - Plug-in bridge

3033702

<https://www.phoenixcontact.com/au/products/3033702>



Plug-in bridge, pitch: 5.2 mm, number of positions: 2, color: red

PT 2,5-PE - Ground terminal

3209536

<https://www.phoenixcontact.com/au/products/3209536>



FBSR 3-5 - Plug-in bridge

3001591

<https://www.phoenixcontact.com/au/products/3001591>



Plug-in bridge, pitch: 5.2 mm, number of positions: 3, color: red

FBSR 4-5 - Plug-in bridge

3001592

<https://www.phoenixcontact.com/au/products/3001592>



Plug-in bridge, pitch: 5.2 mm, number of positions: 4, color: red

PT 2,5-PE - Ground terminal

3209536

<https://www.phoenixcontact.com/au/products/3209536>



FBSR 5-5 - Plug-in bridge

3001593

<https://www.phoenixcontact.com/au/products/3001593>

Plug-in bridge, pitch: 5.2 mm, number of positions: 5, color: red



FBSR 10-5 - Plug-in bridge

3033710

<https://www.phoenixcontact.com/au/products/3033710>

Plug-in bridge, pitch: 5.2 mm, number of positions: 10, color: red



PT 2,5-PE - Ground terminal

3209536

<https://www.phoenixcontact.com/au/products/3209536>



FBS 2-5 BU - Plug-in bridge

3036877

<https://www.phoenixcontact.com/au/products/3036877>



Plug-in bridge, pitch: 5.2 mm, number of positions: 2, color: blue

FBS 3-5 BU - Plug-in bridge

3036880

<https://www.phoenixcontact.com/au/products/3036880>



Plug-in bridge, pitch: 5.2 mm, number of positions: 3, color: blue

PT 2,5-PE - Ground terminal

3209536

<https://www.phoenixcontact.com/au/products/3209536>



FBS 4-5 BU - Plug-in bridge

3036893

<https://www.phoenixcontact.com/au/products/3036893>



Plug-in bridge, pitch: 5.2 mm, number of positions: 4, color: blue

FBS 5-5 BU - Plug-in bridge

3036903

<https://www.phoenixcontact.com/au/products/3036903>



Plug-in bridge, pitch: 5.2 mm, number of positions: 5, color: blue

PT 2,5-PE - Ground terminal

3209536

<https://www.phoenixcontact.com/au/products/3209536>



FBS 10-5 BU - Plug-in bridge

3036916

<https://www.phoenixcontact.com/au/products/3036916>



Plug-in bridge, pitch: 5.2 mm, number of positions: 10, color: blue

FBS 20-5 BU - Plug-in bridge

3036929

<https://www.phoenixcontact.com/au/products/3036929>



Plug-in bridge, pitch: 5.2 mm, number of positions: 20, color: blue

PT 2,5-PE - Ground terminal

3209536

<https://www.phoenixcontact.com/au/products/3209536>



FBS 50-5 BU - Plug-in bridge

3032114

<https://www.phoenixcontact.com/au/products/3032114>



Plug-in bridge, pitch: 5.2 mm, number of positions: 50, color: blue

ATP-ST 4 - Partition plate

3030721

<https://www.phoenixcontact.com/au/products/3030721>



Partition plate, length: 59.8 mm, width: 2 mm, height: 39 mm, color: gray

PT 2,5-PE - Ground terminal

3209536

<https://www.phoenixcontact.com/au/products/3209536>



D-ST 2,5 - End cover

3030417

<https://www.phoenixcontact.com/au/products/3030417>

End cover, length: 48.6 mm, width: 2.2 mm, height: 29.1 mm, color: gray



SZF 1-0,6X3,5 - Screwdriver

1204517

<https://www.phoenixcontact.com/au/products/1204517>

Actuation tool, for ST terminal blocks, also suitable for use as a bladed screwdriver, size: 0.6 x 3.5 x 100 mm, 2-component grip, with non-slip grip



PT 2,5-PE - Ground terminal

3209536

<https://www.phoenixcontact.com/au/products/3209536>



STP 5-2-ZB - Marker carriers

3037643

<https://www.phoenixcontact.com/au/products/3037643>



Marker carriers, snaps into ST 2,5 spring-cage terminal blocks, can be marked with UC-TM 5, UC-TMF 5, UCT-TM 5, UCT-TMF 5, ZB 5, or ZBF 5, gray, unlabeled, mounting type: plug in

GBS 5-25X12 - Group marker label for terminal marking

0810588

<https://www.phoenixcontact.com/au/products/0810588>



Group marker label, snaps onto terminal center for screw, spring-cage and quick connection terminal blocks, labeled with a 25 x 12 mm label or manually with the B-STIFT, in the foot part with ZB 5

PT 2,5-PE - Ground terminal

3209536

<https://www.phoenixcontact.com/au/products/3209536>



GBS-ZB/26X6 - Group marker label for terminal marking

0809298

<https://www.phoenixcontact.com/au/products/0809298>



Group marking label, snaps onto terminal center for screw, spring-cage and quick connection terminal blocks, labeled with ESL 26x6 mm or EST 25x6 mm, in the foot part with Zack marker strip, length: 29 mm

D-ST 2,5-0,8 OG - End cover

3030511

<https://www.phoenixcontact.com/au/products/3030511>

End cover, length: 48.6 mm, width: 0.8 mm, height: 29 mm, color: orange



PT 2,5-PE - Ground terminal

3209536

<https://www.phoenixcontact.com/au/products/3209536>

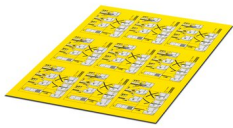


PT-IL - Mounting material

3208090

<https://www.phoenixcontact.com/au/products/3208090>

Operating decal for the push-in Technology



ST-BW - Actuation tool

1207608

<https://www.phoenixcontact.com/au/products/1207608>

Actuation tool, for all 2.5 mm² - 4.0 mm² spring-cages



PT 2,5-PE - Ground terminal

3209536

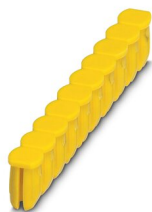
<https://www.phoenixcontact.com/au/products/3209536>



CEC 2,5 - Filler plugs

3062757

<https://www.phoenixcontact.com/au/products/3062757>



Cover for conductor shaft, 10-pos., for spring cage terminal blocks (ST) and terminal blocks with push-in technology (PT) with a width of 5.2 mm

WS PT 2,5 - Warning label

1029026

<https://www.phoenixcontact.com/au/products/1029026>



Warning label, yellow/black, labeled: Lightning flash, mounting type: plug in, for terminal block width: 5.2 mm

PT 2,5-PE - Ground terminal

3209536

<https://www.phoenixcontact.com/au/products/3209536>



WS-DIO PT 2,5 - Warning label

1029037

<https://www.phoenixcontact.com/au/products/1029037>



Warning label, yellow/black, labeled: Diode, mounting type: plug in, for terminal block width: 5.2 mm

NS 35/ 7,5 PERF 2000MM - DIN rail perforated

0801733

<https://www.phoenixcontact.com/au/products/0801733>



DIN rail perforated, acc. to EN 60715, material: Steel, galvanized, passivated with a thick layer, Standard profile, color: silver, Pack of 25 (50 m)

PT 2,5-PE - Ground terminal

3209536

<https://www.phoenixcontact.com/au/products/3209536>



NS 35/ 7,5 UNPERF 2000MM - DIN rail, unperforated

0801681

<https://www.phoenixcontact.com/au/products/0801681>



DIN rail, unperforated, acc. to EN 60715, material: Steel, galvanized, passivated with a thick layer, Standard profile, color: silver, Pack of 25 (50 m)

NS 35/ 7,5 WH PERF 2000MM - DIN rail perforated

1204119

<https://www.phoenixcontact.com/au/products/1204119>



DIN rail perforated, acc. to EN 60715, material: Steel, Galvanized, white passivated, Standard profile, color: silver, Pack of 25 (50 m)

PT 2,5-PE - Ground terminal

3209536

<https://www.phoenixcontact.com/au/products/3209536>



NS 35/ 7,5 WH UNPERF 2000MM-VPE 10 - DIN rail, unperforated

1204122

<https://www.phoenixcontact.com/au/products/1204122>



DIN rail, unperforated, acc. to EN 60715, material: Steel, Galvanized, white passivated, Standard profile, color: silver, Pack of 10 (20 m)

NS 35/ 7,5 AL UNPERF 2000MM - DIN rail, unperforated

0801704

<https://www.phoenixcontact.com/au/products/0801704>



DIN rail, unperforated, acc. to EN 60715, material: Aluminum, uncoated, Standard profile, color: silver, Pack of 25 (50 m)

PT 2,5-PE - Ground terminal

3209536

<https://www.phoenixcontact.com/au/products/3209536>



NS 35/ 7,5 ZN PERF 2000MM - DIN rail perforated

1206421

<https://www.phoenixcontact.com/au/products/1206421>



DIN rail perforated, acc. to EN 60715, material: Steel, galvanized, Standard profile, color: silver, Pack of 25 (50 m)

NS 35/ 7,5 ZN UNPERF 2000MM - DIN rail, unperforated

1206434

<https://www.phoenixcontact.com/au/products/1206434>



DIN rail, unperforated, acc. to EN 60715, material: Steel, galvanized, Standard profile, color: silver, Pack of 25 (50 m)

PT 2,5-PE - Ground terminal

3209536

<https://www.phoenixcontact.com/au/products/3209536>



NS 35/ 7,5 CU UNPERF 2000MM-VPE 10 - DIN rail, unperforated

0801762

<https://www.phoenixcontact.com/au/products/0801762>



DIN rail, unperforated, acc. to EN 60715, material: Copper, uncoated, Standard profile, color: copper-colored, Pack of 10 (20 m)

NS 35/ 7,5 CAP - End cap

1206560

<https://www.phoenixcontact.com/au/products/1206560>

DIN rail end piece, for DIN rail NS 35/7.5



PT 2,5-PE - Ground terminal

3209536

<https://www.phoenixcontact.com/au/products/3209536>



NS 35/15 PERF 2000MM - DIN rail perforated

1201730

<https://www.phoenixcontact.com/au/products/1201730>



DIN rail perforated, similar to EN 60715, material: Steel, galvanized, passivated with a thick layer, Standard profile, color: silver, Pack of 25 (50 m)

NS 35/15 UNPERF 2000MM - DIN rail, unperforated

1201714

<https://www.phoenixcontact.com/au/products/1201714>



DIN rail, unperforated, similar to EN 60715, material: Steel, galvanized, passivated with a thick layer, Standard profile, color: silver, Pack of 25 (50 m)

PT 2,5-PE - Ground terminal

3209536

<https://www.phoenixcontact.com/au/products/3209536>



NS 35/15 WH PERF 2000MM - DIN rail perforated

0806602

<https://www.phoenixcontact.com/au/products/0806602>



DIN rail perforated, similar to EN 60715, material: Steel, Galvanized, white passivated, Standard profile, color: white, Pack of 25 (50 m)

NS 35/15 WH UNPERF 2000MM-VPE 10 - DIN rail, unperforated

1204135

<https://www.phoenixcontact.com/au/products/1204135>



DIN rail, unperforated, similar to EN 60715, material: Steel, Galvanized, white passivated, Standard profile, color: silver, Pack of 10 (20 m)

PT 2,5-PE - Ground terminal

3209536

<https://www.phoenixcontact.com/au/products/3209536>



NS 35/15 AL UNPERF 2000MM - DIN rail, unperforated

1201756

<https://www.phoenixcontact.com/au/products/1201756>



DIN rail, unperforated, similar to EN 60715, material: Aluminum, uncoated, Standard profile, color: silver

NS 35/15 ZN PERF 2000MM - DIN rail perforated

1206599

<https://www.phoenixcontact.com/au/products/1206599>



DIN rail perforated, similar to EN 60715, material: Steel, galvanized, Standard profile, color: silver, Pack of 25 (50 m)

PT 2,5-PE - Ground terminal

3209536

<https://www.phoenixcontact.com/au/products/3209536>



NS 35/15 ZN UNPERF 2000MM - DIN rail, unperforated

1206586

<https://www.phoenixcontact.com/au/products/1206586>



DIN rail, unperforated, similar to EN 60715, material: Steel, galvanized, Standard profile, color: silver, Pack of 25 (50 m)

NS 35/15 CU UNPERF 2000MM-VPE 10 - DIN rail, unperforated

1201895

<https://www.phoenixcontact.com/au/products/1201895>



DIN rail, unperforated, similar to EN 60715, material: Copper, uncoated, Standard profile, color: copper-colored, Pack of 10 (20 m)

PT 2,5-PE - Ground terminal

3209536

<https://www.phoenixcontact.com/au/products/3209536>



NS 35/15 CAP - End cap

1206573

<https://www.phoenixcontact.com/au/products/1206573>

DIN rail end piece, for DIN rail NS 35/15



NS 35/15-2,3 UNPERF 2000MM-VPE 10 - DIN rail, unperforated

1201798

<https://www.phoenixcontact.com/au/products/1201798>



DIN rail, unperforated, acc. to EN 60715, material: Steel, galvanized, passivated with a thick layer, Standard profile 2.3 mm, color: silver, Pack of 10 (20 m)

PT 2,5-PE - Ground terminal

3209536

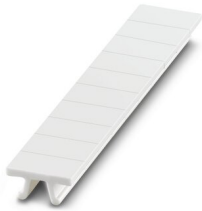
<https://www.phoenixcontact.com/au/products/3209536>



ZB 5 :UNBEDRUCKT - Zack marker strip

1050004

<https://www.phoenixcontact.com/au/products/1050004>



Zack marker strip, Strip, white, unlabeled, can be labeled with: PLOTMARK, CMS-P1-PLOTTER, mounting type: snapped, for terminal block width: 5.2 mm, lettering field size: 5.1 x 10.5 mm, Number of individual labels: 10

ZB 5 CUS - Zack marker strip

0824962

<https://www.phoenixcontact.com/au/products/0824962>



Zack marker strip, can be ordered: Strip, white, labeled according to customer specifications, mounting type: snap into tall marker groove, for terminal block width: 5.2 mm, lettering field size: 5.15 x 10.5 mm, Number of individual labels: 10

PT 2,5-PE - Ground terminal

3209536

<https://www.phoenixcontact.com/au/products/3209536>



ZB 5,LGS:FORTL.ZAHLEN - Zack marker strip

1050017

<https://www.phoenixcontact.com/au/products/1050017>

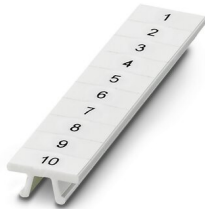


Zack marker strip, Strip, white, labeled, printed horizontally: consecutive numbers 1 ... 10, 11 ... 20, etc. up to 491 ... 500, mounting type: snapped, for terminal block width: 5.2 mm, lettering field size: 5.15 x 10.5 mm, Number of individual labels: 10

ZB 5,QR:FORTL.ZAHLEN - Zack marker strip

1050020

<https://www.phoenixcontact.com/au/products/1050020>



Zack marker strip, white, Printed vertically: consecutive numbers 1 ... 10, 11 ... 20, etc. up to 491 ... 500, mounting type: snapped, for terminal block width: 5.2 mm, lettering field size: 5.15 x 10.5 mm

PT 2,5-PE - Ground terminal

3209536

<https://www.phoenixcontact.com/au/products/3209536>



ZB 5,LGS:GLEICHE ZAHLEN - Zack marker strip

1050033

<https://www.phoenixcontact.com/au/products/1050033>



Zack marker strip, Strip, white, labeled, can be labeled with: CMS-P1-PLOTTER, printed horizontally: Identical numbers 1 or 2, etc. up to 100, mounting type: snapped, for terminal block width: 5.2 mm, lettering field size: 5.15 x 10.5 mm, Number of individual labels: 10

ZB 5,LGS:L1-N,PE - Zack marker strip

1050415

<https://www.phoenixcontact.com/au/products/1050415>



Zack marker strip, Strip, white, labeled, horizontal: L1, L2, L3, N, PE, L1, L2, L3, N, PE, mounting type: snapped, for terminal block width: 5.2 mm, lettering field size: 5.15 x 10.5 mm, Number of individual labels: 10

PT 2,5-PE - Ground terminal

3209536

<https://www.phoenixcontact.com/au/products/3209536>



UC-TM 5 - Marker for terminal blocks

0818108

<https://www.phoenixcontact.com/au/products/0818108>



Marker for terminal blocks, Sheet, white, unlabeled, can be labeled with: BLUEMARK ID COLOR, BLUEMARK ID, BLUEMARK CLED, PLOTMARK, CMS-P1-PLOTTER, mounting type: snapped, for terminal block width: 5.2 mm, lettering field size: 4.6 x 10.5 mm, Number of individual labels: 96

UC-TM 5 CUS - Marker for terminal blocks

0824581

<https://www.phoenixcontact.com/au/products/0824581>



Marker for terminal blocks, can be ordered: by sheet, white, labeled according to customer specifications, mounting type: snap into tall marker groove, for terminal block width: 5.2 mm, lettering field size: 10.5 x 4.6 mm, Number of individual labels: 96

PT 2,5-PE - Ground terminal

3209536

<https://www.phoenixcontact.com/au/products/3209536>



UCT-TM 5 - Marker for terminal blocks

0828734

<https://www.phoenixcontact.com/au/products/0828734>



Marker for terminal blocks, Sheet, white, unlabeled, can be labeled with: TOPMARK NEO, TOPMARK LASER, BLUEMARK ID COLOR, BLUEMARK ID, BLUEMARK CLED, THERMOMARK PRIME, THERMOMARK CARD 2.0, THERMOMARK CARD, mounting type: snapped, for terminal block width: 5.2 mm, lettering field size: 4.6 x 10.5 mm, Number of individual labels: 72

UCT-TM 5 CUS - Marker for terminal blocks

0829595

<https://www.phoenixcontact.com/au/products/0829595>



Marker for terminal blocks, can be ordered: by sheet, white, labeled according to customer specifications, mounting type: snap into tall marker groove, for terminal block width: 5.2 mm, lettering field size: 4.6 x 10.5 mm, Number of individual labels: 72

PT 2,5-PE - Ground terminal

3209536

<https://www.phoenixcontact.com/au/products/3209536>



GBS 5-25X5 - Group marker label for terminal marking

0829126

<https://www.phoenixcontact.com/au/products/0829126>



Group marking label, can be snapped into terminal center for screw, spring-cage, push-in, and fast connection terminal blocks, can be labeled with a 24 x 4 mm label or manually using B-STIFT, in the foot part with ZB 5

ZBF 5:UNBEDRUCKT - Zack Marker strip, flat

0808642

<https://www.phoenixcontact.com/au/products/0808642>



Zack Marker strip, flat, Strip, white, unlabeled, can be labeled with: PLOTMARK, CMS-P1-PLOTTER, mounting type: snapped, for terminal block width: 5 mm, lettering field size: 5.1 x 5.2 mm, Number of individual labels: 10

PT 2,5-PE - Ground terminal

3209536

<https://www.phoenixcontact.com/au/products/3209536>



ZBF 5 CUS - Zack Marker strip, flat

0825025

<https://www.phoenixcontact.com/au/products/0825025>



Zack Marker strip, flat, can be ordered: Strip, white, labeled according to customer specifications, mounting type: snap into flat marker groove, for terminal block width: 5 mm, lettering field size: 5.15 x 5.15 mm, Number of individual labels: 10

ZBF 5,LGS:FORTL.ZAHLEN - Zack Marker strip, flat

0808671

<https://www.phoenixcontact.com/au/products/0808671>



Zack Marker strip, flat, Strip, white, labeled, printed horizontally: consecutive numbers 1 ... 10, 11 ... 20, etc. up to 491 ... 500, mounting type: snapped, for terminal block width: 5 mm, lettering field size: 5.15 x 5.15 mm, Number of individual labels: 10

PT 2,5-PE - Ground terminal

3209536

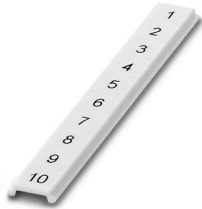
<https://www.phoenixcontact.com/au/products/3209536>



ZBF 5,QR:FORTL.ZAHLEN - Zack Marker strip, flat

0808697

<https://www.phoenixcontact.com/au/products/0808697>



Zack Marker strip, flat, Strip, white, labeled, Printed vertically: consecutive numbers 1 ... 10, 11 ... 20, etc. up to 91 ... 100, mounting type: snapped, for terminal block width: 5 mm, lettering field size: 5.15 x 5.15 mm, Number of individual labels: 10

ZBF 5,LGS:GERADE ZAHLEN - Zack Marker strip, flat

0810821

<https://www.phoenixcontact.com/au/products/0810821>



Zack Marker strip, flat, Strip, white, labeled, printed horizontally: consecutive even numbers 2 ... 20, 22 ... 40, etc. up to 82 ... 100, mounting type: snapped, for terminal block width: 5 mm, lettering field size: 5.15 x 5.15 mm, Number of individual labels: 10

PT 2,5-PE - Ground terminal

3209536

<https://www.phoenixcontact.com/au/products/3209536>



ZBF 5,LGS:UNGERADE ZAHLEN - Zack Marker strip, flat

0810863

<https://www.phoenixcontact.com/au/products/0810863>



Zack Marker strip, flat, Strip, white, labeled, printed horizontally: Odd numbers 1 - 19, 21 - 39, etc. up to 81 - 99, mounting type: snapped, for terminal block width: 5 mm, lettering field size: 5.15 x 5.15 mm, Number of individual labels: 10

UC-TMF 5 - Marker for terminal blocks

0818153

<https://www.phoenixcontact.com/au/products/0818153>



Marker for terminal blocks, Sheet, white, unlabeled, can be labeled with: BLUEMARK ID COLOR, BLUEMARK ID, BLUEMARK CLED, PLOTMARK, CMS-P1-PLOTTER, mounting type: snapped, for terminal block width: 5.2 mm, lettering field size: 4.6 x 5.1 mm, Number of individual labels: 96

PT 2,5-PE - Ground terminal

3209536

<https://www.phoenixcontact.com/au/products/3209536>



UC-TMF 5 CUS - Marker for terminal blocks

0824638

<https://www.phoenixcontact.com/au/products/0824638>



Marker for terminal blocks, can be ordered: by sheet, white, labeled according to customer specifications, mounting type: snap into flat marker groove, for terminal block width: 5.2 mm, lettering field size: 4.6 x 5.1 mm, Number of individual labels: 96

UCT-TMF 5 - Marker for terminal blocks

0828744

<https://www.phoenixcontact.com/au/products/0828744>



Marker for terminal blocks, Sheet, white, unlabeled, can be labeled with: TOPMARK NEO, TOPMARK LASER, BLUEMARK ID COLOR, BLUEMARK ID, BLUEMARK CLED, THERMOMARK PRIME, THERMOMARK CARD 2.0, THERMOMARK CARD, mounting type: snapped, for terminal block width: 5.2 mm, lettering field size: 4.4 x 4.7 mm, Number of individual labels: 72

PT 2,5-PE - Ground terminal

3209536

<https://www.phoenixcontact.com/au/products/3209536>



UCT-TMF 5 CUS - Marker for terminal blocks

0829658

<https://www.phoenixcontact.com/au/products/0829658>



Marker for terminal blocks, can be ordered: by sheet, white, labeled according to customer specifications, mounting type: snap into flat marker groove, for terminal block width: 5.2 mm, lettering field size: 4.4 x 4.7 mm, Number of individual labels: 72

MPS-MT - Test plugs

0201744

<https://www.phoenixcontact.com/au/products/0201744>



Test plugs, with solder connection up to 1 mm² conductor cross section, number of positions: 1, color: gray

PT 2,5-PE - Ground terminal

3209536

<https://www.phoenixcontact.com/au/products/3209536>



MPS-IH WH - Insulating sleeve

0201663

<https://www.phoenixcontact.com/au/products/0201663>

Insulating sleeve, color: white



MPS-IH RD - Insulating sleeve

0201676

<https://www.phoenixcontact.com/au/products/0201676>

Insulating sleeve, color: red



PT 2,5-PE - Ground terminal

3209536

<https://www.phoenixcontact.com/au/products/3209536>

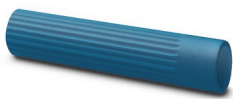


MPS-IH BU - Insulating sleeve

0201689

<https://www.phoenixcontact.com/au/products/0201689>

Insulating sleeve, color: blue



MPS-IH YE - Insulating sleeve

0201692

<https://www.phoenixcontact.com/au/products/0201692>

Insulating sleeve, color: yellow



PT 2,5-PE - Ground terminal

3209536

<https://www.phoenixcontact.com/au/products/3209536>



MPS-IH GN - Insulating sleeve

0201702

<https://www.phoenixcontact.com/au/products/0201702>

Insulating sleeve, color: green



MPS-IH GY - Insulating sleeve

0201728

<https://www.phoenixcontact.com/au/products/0201728>

Insulating sleeve, color: gray



PT 2,5-PE - Ground terminal

3209536

<https://www.phoenixcontact.com/au/products/3209536>



MPS-IH BK - Insulating sleeve

0201731

<https://www.phoenixcontact.com/au/products/0201731>

Insulating sleeve, color: black



ISH 2,5/0,2 - Insulating sleeve

3002843

<https://www.phoenixcontact.com/au/products/3002843>

Insulating sleeve, color: white



PT 2,5-PE - Ground terminal

3209536

<https://www.phoenixcontact.com/au/products/3209536>



ISH 2,5/0,5 - Insulating sleeve

3002856

<https://www.phoenixcontact.com/au/products/3002856>



Insulating sleeve, color: gray

ISH 2,5/1,0 - Insulating sleeve

3002869

<https://www.phoenixcontact.com/au/products/3002869>



Insulating sleeve, color: black

PT 2,5-PE - Ground terminal

3209536

<https://www.phoenixcontact.com/au/products/3209536>



PAI-4-FIX-5/6 BU - Test adapter

3035975

<https://www.phoenixcontact.com/au/products/3035975>



4 mm test adapter, for terminal blocks with 5.2 mm and 6.2 mm pitch

PAI-4-FIX-5/6 OG - Test adapter

3035974

<https://www.phoenixcontact.com/au/products/3035974>



4 mm test adapter, for terminal blocks with 5.2 mm and 6.2 mm pitch

PT 2,5-PE - Ground terminal

3209536

<https://www.phoenixcontact.com/au/products/3209536>



PAI-4-FIX-5/6 YE - Test adapter

3035977

<https://www.phoenixcontact.com/au/products/3035977>



4 mm test adapter, for terminal blocks with 5.2 mm and 6.2 mm pitch

PAI-4-FIX-5/6 RD - Test adapter

3035976

<https://www.phoenixcontact.com/au/products/3035976>



4 mm test adapter, for terminal blocks with 5.2 mm and 6.2 mm pitch

PT 2,5-PE - Ground terminal

3209536

<https://www.phoenixcontact.com/au/products/3209536>



PAI-4-FIX-5/6 GN - Test adapter

3035978

<https://www.phoenixcontact.com/au/products/3035978>



4 mm test adapter, for terminal blocks with 5.2 mm and 6.2 mm pitch

PAI-4-FIX-5/6 BK - Test adapter

3035980

<https://www.phoenixcontact.com/au/products/3035980>



4 mm test adapter, for terminal blocks with 5.2 mm and 6.2 mm pitch

PT 2,5-PE - Ground terminal

3209536

<https://www.phoenixcontact.com/au/products/3209536>



PAI-4-FIX-5/6 GY - Test adapter

3035982

<https://www.phoenixcontact.com/au/products/3035982>



4 mm test adapter, for terminal blocks with 5.2 mm and 6.2 mm pitch

PAI-4-FIX-5/6 VT - Test adapter

3035979

<https://www.phoenixcontact.com/au/products/3035979>



4 mm test adapter, for terminal blocks with 5.2 mm and 6.2 mm pitch

PT 2,5-PE - Ground terminal

3209536

<https://www.phoenixcontact.com/au/products/3209536>



PAI-4-FIX-5/6 BN - Test adapter

3035981

<https://www.phoenixcontact.com/au/products/3035981>



4 mm test adapter, for terminal blocks with 5.2 mm and 6.2 mm pitch

PAI-4-FIX-5/6 WH - Test adapter

3035983

<https://www.phoenixcontact.com/au/products/3035983>



4 mm test adapter, for terminal blocks with 5.2 mm and 6.2 mm pitch

PT 2,5-PE - Ground terminal

3209536

<https://www.phoenixcontact.com/au/products/3209536>



PS-5 - Test plugs

3030983

<https://www.phoenixcontact.com/au/products/3030983>



Test plugs, Modular test plug, number of positions: 1, color: red

DP PS-5 - Spacer plate

3036725

<https://www.phoenixcontact.com/au/products/3036725>



Spacer plate, length: 22.4 mm, width: 5.2 mm, height: 29 mm, number of positions: 1, color: red

PT 2,5-PE - Ground terminal

3209536

<https://www.phoenixcontact.com/au/products/3209536>



PS-5/2,3MM RD - Test plugs

3038723

<https://www.phoenixcontact.com/au/products/3038723>



Test plugs, number of positions: 1, color: red

PROJECT COMPLETE - Software

1050453

<https://www.phoenixcontact.com/au/products/1050453>



Intuitive planning and marking software for configuring terminal strips and for professional marking of marking materials for terminal blocks, conductors, cables, devices, and systems. The software is available for download

PT 2,5-PE - Ground terminal

3209536

<https://www.phoenixcontact.com/au/products/3209536>



CLIPFIX 35 - End clamp

3022218

<https://www.phoenixcontact.com/au/products/3022218>



Quick mounting end clamp for NS 35/7,5 DIN rail or NS 35/15 DIN rail, with marking option, width: 9.5 mm, color: gray

CLIPFIX 35-5 - End clamp

3022276

<https://www.phoenixcontact.com/au/products/3022276>



Quick mounting end clamp for NS 35/7,5 DIN rail or NS 35/15 DIN rail, with marking option, with parking option for FBS...5, FBS...6, KSS 5, KSS 6, width: 5.15 mm, color: gray

PT 2,5-PE - Ground terminal

3209536

<https://www.phoenixcontact.com/au/products/3209536>

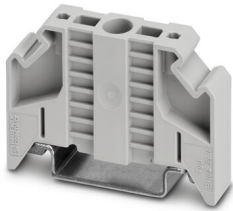


E/NS 35 N - End clamp

0800886

<https://www.phoenixcontact.com/au/products/0800886>

End clamp, width: 9.5 mm, color: gray



Phoenix Contact 2023 © - all rights reserved

<https://www.phoenixcontact.com>

PHOENIX CONTACT PTY Ltd

Unit 7, 2-8 South Street

Rydalmere NSW 2116

1300 786 411

customerservice@phoenixcontact.com.au