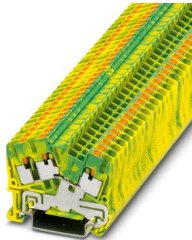


PTS 2,5-TWIN-PE - Ground terminal

3211935

<https://www.phoenixcontact.com/au/products/3211935>

Please be informed that the data shown in this PDF document is generated from our Online Catalog. Please find the complete data in the user documentation. Our General Terms of Use for Downloads are valid.



Ground terminal, number of connections: 3, connection method: Push-in connection, 1 level, cross section: 0.14 mm² - 4 mm², mounting type: NS 35/7,5, NS 35/15, color: green-yellow

Your advantages

- 2, 3, and 4-conductor terminal blocks with the same shape
- Ground terminal blocks of the same shape are available
- The PTS 2,5, which is equipped with four bridge shafts, offers a wide range of potential bridging options
- Angled conductor entry for use in flat terminal boxes
- Large space saving when used in concealed wiring systems

Commercial Data

Item number	3211935
Packing unit	50 pc
Minimum order quantity	50 pc
Sales Key	BE2222
Product Key	BE2222
Catalog Page	Page 84 (C-1-2019)
GTIN	4046356499538
Weight per Piece (including packing)	12.002 g
Weight per Piece (excluding packing)	11.65 g
Customs tariff number	85369010
Country of origin	PL

Technical Data

Product properties

Product type	Ground terminal block
Product family	PTS
Number of connections	3
Number of rows	1

Insulation characteristics

Overvoltage category	III
----------------------	-----

Electrical properties

Rated surge voltage	8 kV
Maximum power dissipation for nominal condition	0.77 W

Connection data

Grounding foot	Yes
Number of connections per level	3
Nominal cross section	2.5 mm ²

1 level

Note	Please observe the current carrying capacity of the DIN rails.
Stripping length	8 mm ... 10 mm
Internal cylindrical gage	A3
Connection in acc. with standard	IEC 60947-7-2
Conductor cross section rigid	0.14 mm ² ... 4 mm ²
Cross section AWG	26 ... 12 (converted acc. to IEC)
Conductor cross section flexible	0.14 mm ² ... 4 mm ²
Conductor cross section, flexible [AWG]	26 ... 14 (converted acc. to IEC)
Conductor cross-section flexible (ferrule without plastic sleeve)	0.14 mm ² ... 2.5 mm ²
Flexible conductor cross section (ferrule with plastic sleeve)	0.14 mm ² ... 2.5 mm ²
Maximum load current	with 4 mm ² conductor cross section, rigid
Stripping length	8 mm ... 10 mm

1 level Connection cross sections directly pluggable

Conductor cross section rigid	0.34 mm ² ... 4 mm ²
Conductor cross-section flexible (ferrule without plastic sleeve)	0.34 mm ² ... 2.5 mm ²
Flexible conductor cross section (ferrule with plastic sleeve)	0.34 mm ² ... 2.5 mm ²

Ex data

Rated data (ATEX/IECEx)

Identification	⊕ II 2 GD Ex eb IIC Gb
Operating temperature range	-60 °C ... 110 °C
	3031762 D-ST5 2,5

PTS 2,5-TWIN-PE - Ground terminal



3211935

<https://www.phoenixcontact.com/au/products/3211935>

Ex-certified accessories	1204517 SZF 1-0,6X3,5
	3022276 CLIPFIX 35-5
	3022218 CLIPFIX 35
output	(Permanent)

Ex connection data General

Nominal cross section	2.5 mm ²
Rated cross section AWG	14
Connection capacity rigid	0.14 mm ² ... 4 mm ²
Connection capacity AWG	26 ... 12
Connection capacity flexible	0.14 mm ² ... 2.5 mm ²
Connection capacity AWG	26 ... 14

Dimensions

Width	5.2 mm
End cover width	2.2 mm
Height	49 mm
Height NS 35/15	50.5 mm
Height NS 35/7,5	43 mm
Length	49 mm

Material specifications

Color	green-yellow
Flammability rating according to UL 94	V0
Insulating material group	I
Insulating material	PA
Static insulating material application in cold	-60 °C
Temperature index of insulation material (DIN EN 60216-1 (VDE 0304-21))	130 °C
Relative insulation material temperature index (Elec., UL 746 B)	130 °C
Fire protection for rail vehicles (DIN EN 45545-2) R22	HL 1 - HL 3
Fire protection for rail vehicles (DIN EN 45545-2) R23	HL 1 - HL 3
Fire protection for rail vehicles (DIN EN 45545-2) R24	HL 1 - HL 3
Fire protection for rail vehicles (DIN EN 45545-2) R26	HL 1 - HL 3
Calorimetric heat release NFPA 130 (ASTM E 1354)	28 MJ/kg
Surface flammability NFPA 130 (ASTM E 162)	passed
Specific optical density of smoke NFPA 130 (ASTM E 662)	passed
Smoke gas toxicity NFPA 130 (SMP 800C)	passed

Mechanical properties

Mechanical data

Open side panel	Yes
-----------------	-----

Environmental and real-life conditions

PTS 2,5-TWIN-PE - Ground terminal



3211935

<https://www.phoenixcontact.com/au/products/3211935>

Oscillation/broadband noise

Specification	DIN EN 50155 (VDE 0115-200):2008-03
Spectrum	Service life test category 1, class B, body mounted
Frequency	$f_1 = 5 \text{ Hz}$ to $f_2 = 150 \text{ Hz}$
ASD level	$1.857 \text{ (m/s}^2\text{)}^2\text{/Hz}$
Acceleration	0.8g
Test duration per axis	5 h
Test directions	X-, Y- and Z-axis
Result	Test passed

Shocks

Specification	DIN EN 50155 (VDE 0115-200):2008-03
Pulse shape	Half-sine
Acceleration	5g
Shock duration	30 ms
Number of shocks per direction	3
Test directions	X-, Y- and Z-axis (pos. and neg.)
Result	Test passed

Ambient conditions

Ambient temperature (operation)	-60 °C ... 105 °C (max. short-term operating temperature RTI Elec.)
Ambient temperature (storage/transport)	-25 °C ... 60 °C (for a short time, not exceeding 24 h, -60 °C to +70 °C)
Ambient temperature (assembly)	-5 °C ... 70 °C
Ambient temperature (actuation)	-5 °C ... 70 °C
Permissible humidity (storage/transport)	30 % ... 70 %

Standards and regulations

Connection in acc. with standard	IEC 60947-7-2
----------------------------------	---------------

Mounting

Mounting type	NS 35/7,5
	NS 35/15

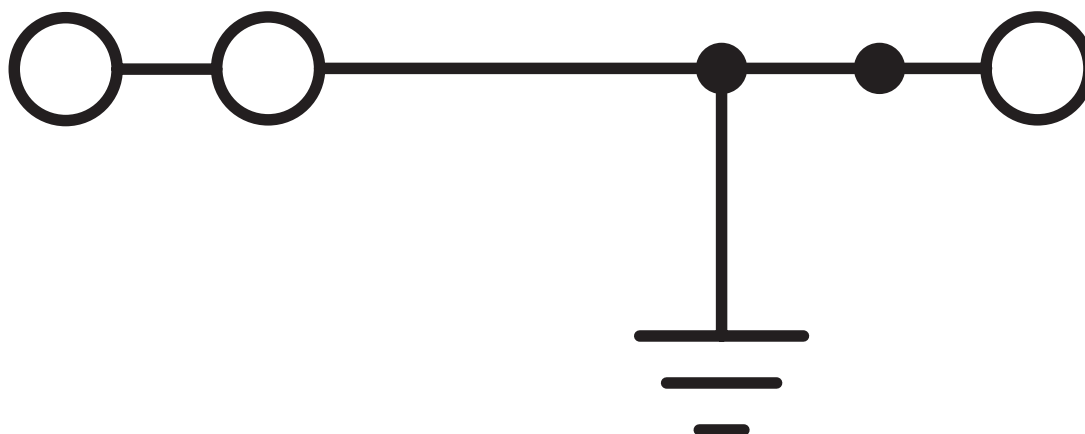
PTS 2,5-TWIN-PE - Ground terminal

3211935

<https://www.phoenixcontact.com/au/products/3211935>

Drawings

Circuit diagram



PTS 2,5-TWIN-PE - Ground terminal




3211935


<https://www.phoenixcontact.com/au/products/3211935>

Approvals

To download certificates, visit the product detail page: <https://www.phoenixcontact.com/au/products/3211935>

 CSA Approval ID: 13631				
	Nominal Voltage U_N	Nominal Current I_N	Cross Section AWG	Cross Section mm^2
	-	-	26 - 12	-

 cUL Recognized Approval ID: FILE E 60425				
	Nominal Voltage U_N	Nominal Current I_N	Cross Section AWG	Cross Section mm^2
Use group B	-	-	26 - 12	-
Use group C	-	-	26 - 12	-

 UL Recognized Approval ID: FILE E 60425				
	Nominal Voltage U_N	Nominal Current I_N	Cross Section AWG	Cross Section mm^2
Use group B	-	-	26 - 12	-
Use group C	-	-	26 - 12	-

 IECEE CB Scheme Approval ID: DE1-62994				
	Nominal Voltage U_N	Nominal Current I_N	Cross Section AWG	Cross Section mm^2
	-	-	-	0.2 - 2.5

 EAC Approval ID: RU C-DE.BL08.B.00644				
---	--	--	--	--

 LR Approval ID: LR2371832TA				
---	--	--	--	--

 ClassNK Approval ID: 14ME0912				
---	--	--	--	--

PTS 2,5-TWIN-PE - Ground terminal



3211935

<https://www.phoenixcontact.com/au/products/3211935>



RS

Approval ID: 22.44.01.00083.250



BV

Approval ID: 25278/C1 BV



VDE Zeichengenehmigung

Approval ID: 40036433

Nominal Voltage U_N

Nominal Current I_N

Cross Section AWG

Cross Section mm^2

-

-

-

0.2 - 2.5



PRS

Approval ID: TE/2107/880590/21



LR

Approval ID: 14/20056



IECEx

Approval ID: IECEx SEV13.0005U



ATEX

Approval ID: SEV13ATEX0159U



CCC

Approval ID: 2020322313000631



IECEx

Approval ID: IECEx SEV13.0005U



ATEX

Approval ID: SEV13ATEX0159U



UKCA-EX

Approval ID: CML 22UKEX1224U

PTS 2,5-TWIN-PE - Ground terminal



3211935

<https://www.phoenixcontact.com/au/products/3211935>

Classifications

ECLASS

ECLASS-11.0	27141141
ECLASS-13.0	27250103

ETIM

ETIM 8.0	EC000901
----------	----------

UNSPSC

UNSPSC 21.0	39121400
-------------	----------

PTS 2,5-TWIN-PE - Ground terminal



3211935

<https://www.phoenixcontact.com/au/products/3211935>

Environmental Product Compliance

China RoHS	Environmentally friendly use period: unlimited = EFUP-e
	No hazardous substances above threshold values

PTS 2,5-TWIN-PE - Ground terminal

3211935

<https://www.phoenixcontact.com/au/products/3211935>

Accessories

FBS 2-5 - Plug-in bridge

3030161

<https://www.phoenixcontact.com/au/products/3030161>



Plug-in bridge, pitch: 5.2 mm, number of positions: 2, length: 23 mm, color: red

FBS 3-5 - Plug-in bridge

3030174

<https://www.phoenixcontact.com/au/products/3030174>



Plug-in bridge, pitch: 5.2 mm, number of positions: 3, length: 23 mm, color: red

PTS 2,5-TWIN-PE - Ground terminal

3211935

<https://www.phoenixcontact.com/au/products/3211935>



FBS 4-5 - Plug-in bridge

3030187

<https://www.phoenixcontact.com/au/products/3030187>



Plug-in bridge, pitch: 5.2 mm, number of positions: 4, length: 23 mm, color: red

FBS 5-5 - Plug-in bridge

3030190

<https://www.phoenixcontact.com/au/products/3030190>



Plug-in bridge, pitch: 5.2 mm, number of positions: 5, length: 23 mm, color: red

PTS 2,5-TWIN-PE - Ground terminal

3211935

<https://www.phoenixcontact.com/au/products/3211935>



FBS 10-5 - Plug-in bridge

3030213

<https://www.phoenixcontact.com/au/products/3030213>



Plug-in bridge, pitch: 5.2 mm, number of positions: 10, length: 23 mm, color: red

FBS 20-5 - Plug-in bridge

3030226

<https://www.phoenixcontact.com/au/products/3030226>



Plug-in bridge, pitch: 5.2 mm, number of positions: 20, color: red

PTS 2,5-TWIN-PE - Ground terminal

3211935

<https://www.phoenixcontact.com/au/products/3211935>



FBSR 3-5 - Plug-in bridge

3001591

<https://www.phoenixcontact.com/au/products/3001591>



Plug-in bridge, pitch: 5.2 mm, number of positions: 3, color: red

FBSR 10-5 - Plug-in bridge

3033710

<https://www.phoenixcontact.com/au/products/3033710>



Plug-in bridge, pitch: 5.2 mm, number of positions: 10, color: red

PTS 2,5-TWIN-PE - Ground terminal

3211935

<https://www.phoenixcontact.com/au/products/3211935>



FBS 2-5 BU - Plug-in bridge

3036877

<https://www.phoenixcontact.com/au/products/3036877>



Plug-in bridge, pitch: 5.2 mm, number of positions: 2, color: blue

FBS 3-5 BU - Plug-in bridge

3036880

<https://www.phoenixcontact.com/au/products/3036880>



Plug-in bridge, pitch: 5.2 mm, number of positions: 3, color: blue

PTS 2,5-TWIN-PE - Ground terminal

3211935

<https://www.phoenixcontact.com/au/products/3211935>



FBS 4-5 BU - Plug-in bridge

3036893

<https://www.phoenixcontact.com/au/products/3036893>



Plug-in bridge, pitch: 5.2 mm, number of positions: 4, color: blue

FBS 5-5 BU - Plug-in bridge

3036903

<https://www.phoenixcontact.com/au/products/3036903>



Plug-in bridge, pitch: 5.2 mm, number of positions: 5, color: blue

PTS 2,5-TWIN-PE - Ground terminal

3211935

<https://www.phoenixcontact.com/au/products/3211935>



FBS 10-5 BU - Plug-in bridge

3036916

<https://www.phoenixcontact.com/au/products/3036916>



Plug-in bridge, pitch: 5.2 mm, number of positions: 10, color: blue

FBS 20-5 BU - Plug-in bridge

3036929

<https://www.phoenixcontact.com/au/products/3036929>



Plug-in bridge, pitch: 5.2 mm, number of positions: 20, color: blue

PTS 2,5-TWIN-PE - Ground terminal

3211935

<https://www.phoenixcontact.com/au/products/3211935>



FBS 50-5 BU - Plug-in bridge

3032114

<https://www.phoenixcontact.com/au/products/3032114>



Plug-in bridge, pitch: 5.2 mm, number of positions: 50, color: blue

D-ST5 2,5 - End cover

3031762

<https://www.phoenixcontact.com/au/products/3031762>



End cover, length: 51 mm, width: 2.2 mm, height: 43 mm, color: gray

PTS 2,5-TWIN-PE - Ground terminal

3211935

<https://www.phoenixcontact.com/au/products/3211935>



STP 5-2-ZB - Marker carriers

3037643

<https://www.phoenixcontact.com/au/products/3037643>



Marker carriers, snaps into ST 2,5 spring-cage terminal blocks, can be marked with UC-TM 5, UC-TMF 5, UCT-TM 5, UCT-TMF 5, ZB 5, or ZBF 5, gray, unlabeled, mounting type: plug in

GBS 5-25X12 - Group marker label for terminal marking

0810588

<https://www.phoenixcontact.com/au/products/0810588>



Group marker label, snaps onto terminal center for screw, spring-cage and quick connection terminal blocks, labeled with a 25 x 12 mm label or manually with the B-STIFT, in the foot part with ZB 5

PTS 2,5-TWIN-PE - Ground terminal

3211935

<https://www.phoenixcontact.com/au/products/3211935>



GBS-ZB/26X6 - Group marker label for terminal marking

0809298

<https://www.phoenixcontact.com/au/products/0809298>



Group marking label, snaps onto terminal center for screw, spring-cage and quick connection terminal blocks, labeled with ESL 26x6 mm or EST 25x6 mm, in the foot part with Zack marker strip, length: 29 mm

SZF 1-0,6X3,5 - Screwdriver

1204517

<https://www.phoenixcontact.com/au/products/1204517>



Actuation tool, for ST terminal blocks, also suitable for use as a bladed screwdriver, size: 0.6 x 3.5 x 100 mm, 2-component grip, with non-slip grip

PTS 2,5-TWIN-PE - Ground terminal

3211935

<https://www.phoenixcontact.com/au/products/3211935>



ATP-QTC - Partition plate

3206209

<https://www.phoenixcontact.com/au/products/3206209>

Partition plate, length: 64.4 mm, width: 2 mm, height: 41.8 mm, color: gray



PT-IL - Mounting material

3208090

<https://www.phoenixcontact.com/au/products/3208090>

Operating decal for the push-in Technology



PTS 2,5-TWIN-PE - Ground terminal

3211935

<https://www.phoenixcontact.com/au/products/3211935>



ST-BW - Actuation tool

1207608

<https://www.phoenixcontact.com/au/products/1207608>

Actuation tool, for all 2.5 mm² - 4.0 mm² spring-cages



CEC 2,5 - Filler plugs

3062757

<https://www.phoenixcontact.com/au/products/3062757>

Cover for conductor shaft, 10-pos., for spring cage terminal blocks (ST) and terminal blocks with push-in technology (PT) with a width of 5.2 mm



PTS 2,5-TWIN-PE - Ground terminal

3211935

<https://www.phoenixcontact.com/au/products/3211935>

WS PT 2,5 - Warning label

1029026

<https://www.phoenixcontact.com/au/products/1029026>



Warning label, yellow/black, labeled: Lightning flash, mounting type: plug in, for terminal block width: 5.2 mm

WS-DIO PT 2,5 - Warning label

1029037

<https://www.phoenixcontact.com/au/products/1029037>



Warning label, yellow/black, labeled: Diode, mounting type: plug in, for terminal block width: 5.2 mm

PTS 2,5-TWIN-PE - Ground terminal

3211935

<https://www.phoenixcontact.com/au/products/3211935>



NS 35/ 7,5 PERF 2000MM - DIN rail perforated

0801733

<https://www.phoenixcontact.com/au/products/0801733>



DIN rail perforated, acc. to EN 60715, material: Steel, galvanized, passivated with a thick layer, Standard profile, color: silver, Pack of 25 (50 m)

NS 35/ 7,5 UNPERF 2000MM - DIN rail, unperforated

0801681

<https://www.phoenixcontact.com/au/products/0801681>



DIN rail, unperforated, acc. to EN 60715, material: Steel, galvanized, passivated with a thick layer, Standard profile, color: silver, Pack of 25 (50 m)

PTS 2,5-TWIN-PE - Ground terminal

3211935

<https://www.phoenixcontact.com/au/products/3211935>



NS 35/ 7,5 WH PERF 2000MM - DIN rail perforated

1204119

<https://www.phoenixcontact.com/au/products/1204119>



DIN rail perforated, acc. to EN 60715, material: Steel, Galvanized, white passivated, Standard profile, color: silver, Pack of 25 (50 m)

NS 35/ 7,5 WH UNPERF 2000MM-VPE 10 - DIN rail, unperforated

1204122

<https://www.phoenixcontact.com/au/products/1204122>



DIN rail, unperforated, acc. to EN 60715, material: Steel, Galvanized, white passivated, Standard profile, color: silver, Pack of 10 (20 m)

PTS 2,5-TWIN-PE - Ground terminal

3211935

<https://www.phoenixcontact.com/au/products/3211935>



NS 35/ 7,5 AL UNPERF 2000MM - DIN rail, unperforated

0801704

<https://www.phoenixcontact.com/au/products/0801704>



DIN rail, unperforated, acc. to EN 60715, material: Aluminum, uncoated, Standard profile, color: silver, Pack of 25 (50 m)

NS 35/ 7,5 ZN PERF 2000MM - DIN rail perforated

1206421

<https://www.phoenixcontact.com/au/products/1206421>



DIN rail perforated, acc. to EN 60715, material: Steel, galvanized, Standard profile, color: silver, Pack of 25 (50 m)

PTS 2,5-TWIN-PE - Ground terminal

3211935

<https://www.phoenixcontact.com/au/products/3211935>



NS 35/ 7,5 ZN UNPERF 2000MM - DIN rail, unperforated

1206434

<https://www.phoenixcontact.com/au/products/1206434>



DIN rail, unperforated, acc. to EN 60715, material: Steel, galvanized, Standard profile, color: silver, Pack of 25 (50 m)

NS 35/ 7,5 CU UNPERF 2000MM-VPE 10 - DIN rail, unperforated

0801762

<https://www.phoenixcontact.com/au/products/0801762>



DIN rail, unperforated, acc. to EN 60715, material: Copper, uncoated, Standard profile, color: copper-colored, Pack of 10 (20 m)

PTS 2,5-TWIN-PE - Ground terminal

3211935

<https://www.phoenixcontact.com/au/products/3211935>



NS 35/ 7,5 CAP - End cap

1206560

<https://www.phoenixcontact.com/au/products/1206560>

DIN rail end piece, for DIN rail NS 35/7.5



NS 35/15 PERF 2000MM - DIN rail perforated

1201730

<https://www.phoenixcontact.com/au/products/1201730>



DIN rail perforated, similar to EN 60715, material: Steel, galvanized, passivated with a thick layer, Standard profile, color: silver, Pack of 25 (50 m)

PTS 2,5-TWIN-PE - Ground terminal

3211935

<https://www.phoenixcontact.com/au/products/3211935>



NS 35/15 UNPERF 2000MM - DIN rail, unperforated

1201714

<https://www.phoenixcontact.com/au/products/1201714>



DIN rail, unperforated, similar to EN 60715, material: Steel, galvanized, passivated with a thick layer, Standard profile, color: silver, Pack of 25 (50 m)

NS 35/15 WH PERF 2000MM - DIN rail perforated

0806602

<https://www.phoenixcontact.com/au/products/0806602>



DIN rail perforated, similar to EN 60715, material: Steel, Galvanized, white passivated, Standard profile, color: white, Pack of 25 (50 m)

PTS 2,5-TWIN-PE - Ground terminal

3211935

<https://www.phoenixcontact.com/au/products/3211935>



NS 35/15 WH UNPERF 2000MM-VPE 10 - DIN rail, unperforated

1204135

<https://www.phoenixcontact.com/au/products/1204135>



DIN rail, unperforated, similar to EN 60715, material: Steel, Galvanized, white passivated, Standard profile, color: silver, Pack of 10 (20 m)

NS 35/15 AL UNPERF 2000MM - DIN rail, unperforated

1201756

<https://www.phoenixcontact.com/au/products/1201756>



DIN rail, unperforated, similar to EN 60715, material: Aluminum, uncoated, Standard profile, color: silver

PTS 2,5-TWIN-PE - Ground terminal

3211935

<https://www.phoenixcontact.com/au/products/3211935>



NS 35/15 ZN PERF 2000MM - DIN rail perforated

1206599

<https://www.phoenixcontact.com/au/products/1206599>



DIN rail perforated, similar to EN 60715, material: Steel, galvanized, Standard profile, color: silver, Pack of 25 (50 m)

NS 35/15 ZN UNPERF 2000MM - DIN rail, unperforated

1206586

<https://www.phoenixcontact.com/au/products/1206586>



DIN rail, unperforated, similar to EN 60715, material: Steel, galvanized, Standard profile, color: silver, Pack of 25 (50 m)

PTS 2,5-TWIN-PE - Ground terminal

3211935

<https://www.phoenixcontact.com/au/products/3211935>



NS 35/15 CU UNPERF 2000MM-VPE 10 - DIN rail, unperforated

1201895

<https://www.phoenixcontact.com/au/products/1201895>



DIN rail, unperforated, similar to EN 60715, material: Copper, uncoated, Standard profile, color: copper-colored, Pack of 10 (20 m)

NS 35/15 CAP - End cap

1206573

<https://www.phoenixcontact.com/au/products/1206573>

DIN rail end piece, for DIN rail NS 35/15



PTS 2,5-TWIN-PE - Ground terminal

3211935

<https://www.phoenixcontact.com/au/products/3211935>



NS 35/15-2,3 UNPERF 2000MM-VPE 10 - DIN rail, unperforated

1201798

<https://www.phoenixcontact.com/au/products/1201798>



DIN rail, unperforated, acc. to EN 60715, material: Steel, galvanized, passivated with a thick layer, Standard profile 2.3 mm, color: silver, Pack of 10 (20 m)

ZB 5 :UNBEDRUCKT - Zack marker strip

1050004

<https://www.phoenixcontact.com/au/products/1050004>



Zack marker strip, Strip, white, unlabeled, can be labeled with: PLOTMARK, CMS-P1-PLOTTER, mounting type: snapped, for terminal block width: 5.2 mm, lettering field size: 5.1 x 10.5 mm, Number of individual labels: 10

PTS 2,5-TWIN-PE - Ground terminal

3211935

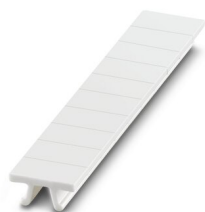
<https://www.phoenixcontact.com/au/products/3211935>



ZB 5 CUS - Zack marker strip

0824962

<https://www.phoenixcontact.com/au/products/0824962>



Zack marker strip, can be ordered: Strip, white, labeled according to customer specifications, mounting type: snap into tall marker groove, for terminal block width: 5.2 mm, lettering field size: 5.15 x 10.5 mm, Number of individual labels: 10

ZB 5,LGS:FORTL.ZAHLEN - Zack marker strip

1050017

<https://www.phoenixcontact.com/au/products/1050017>



Zack marker strip, Strip, white, labeled, printed horizontally: consecutive numbers 1 ... 10, 11 ... 20, etc. up to 491 ... 500, mounting type: snapped, for terminal block width: 5.2 mm, lettering field size: 5.15 x 10.5 mm, Number of individual labels: 10

PTS 2,5-TWIN-PE - Ground terminal

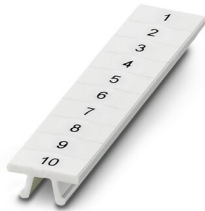
3211935

<https://www.phoenixcontact.com/au/products/3211935>

ZB 5,QR:FORTL.ZAHLEN - Zack marker strip

1050020

<https://www.phoenixcontact.com/au/products/1050020>



Zack marker strip, white, Printed vertically: consecutive numbers 1 ... 10, 11 ... 20, etc. up to 491 ... 500, mounting type: snapped, for terminal block width: 5.2 mm, lettering field size: 5.15 x 10.5 mm

ZB 5,LGS:GLEICHE ZAHLEN - Zack marker strip

1050033

<https://www.phoenixcontact.com/au/products/1050033>



Zack marker strip, Strip, white, labeled, can be labeled with: CMS-P1-PLOTTER, printed horizontally: Identical numbers 1 or 2, etc. up to 100, mounting type: snapped, for terminal block width: 5.2 mm, lettering field size: 5.15 x 10.5 mm, Number of individual labels: 10

PTS 2,5-TWIN-PE - Ground terminal

3211935

<https://www.phoenixcontact.com/au/products/3211935>



ZB 5,LGS:L1-N,PE - Zack marker strip

1050415

<https://www.phoenixcontact.com/au/products/1050415>



Zack marker strip, Strip, white, labeled, horizontal: L1, L2, L3, N, PE, L1, L2, L3, N, PE, mounting type: snapped, for terminal block width: 5.2 mm, lettering field size: 5.15 x 10.5 mm, Number of individual labels: 10

UC-TM 5 - Marker for terminal blocks

0818108

<https://www.phoenixcontact.com/au/products/0818108>



Marker for terminal blocks, Sheet, white, unlabeled, can be labeled with: BLUEMARK ID COLOR, BLUEMARK ID, BLUEMARK CLED, PLOTMARK, CMS-P1-PLOTTER, mounting type: snapped, for terminal block width: 5.2 mm, lettering field size: 4.6 x 10.5 mm, Number of individual labels: 96

PTS 2,5-TWIN-PE - Ground terminal

3211935

<https://www.phoenixcontact.com/au/products/3211935>

UC-TM 5 CUS - Marker for terminal blocks

0824581

<https://www.phoenixcontact.com/au/products/0824581>



Marker for terminal blocks, can be ordered: by sheet, white, labeled according to customer specifications, mounting type: snap into tall marker groove, for terminal block width: 5.2 mm, lettering field size: 10.5 x 4.6 mm, Number of individual labels: 96

UCT-TM 5 - Marker for terminal blocks

0828734

<https://www.phoenixcontact.com/au/products/0828734>



Marker for terminal blocks, Sheet, white, unlabeled, can be labeled with: TOPMARK NEO, TOPMARK LASER, BLUEMARK ID COLOR, BLUEMARK ID, BLUEMARK CLED, THERMOMARK PRIME, THERMOMARK CARD 2.0, THERMOMARK CARD, mounting type: snapped, for terminal block width: 5.2 mm, lettering field size: 4.6 x 10.5 mm, Number of individual labels: 72

PTS 2,5-TWIN-PE - Ground terminal

3211935

<https://www.phoenixcontact.com/au/products/3211935>



UCT-TM 5 CUS - Marker for terminal blocks

0829595

<https://www.phoenixcontact.com/au/products/0829595>



Marker for terminal blocks, can be ordered: by sheet, white, labeled according to customer specifications, mounting type: snap into tall marker groove, for terminal block width: 5.2 mm, lettering field size: 4.6 x 10.5 mm, Number of individual labels: 72

GBS 5-25X5 - Group marker label for terminal marking

0829126

<https://www.phoenixcontact.com/au/products/0829126>



Group marking label, can be snapped into terminal center for screw, spring-cage, push-in, and fast connection terminal blocks, can be labeled with a 24 x 4 mm label or manually using B-STIFT, in the foot part with ZB 5

PTS 2,5-TWIN-PE - Ground terminal

3211935

<https://www.phoenixcontact.com/au/products/3211935>



ZBF 5:UNBEDRUCKT - Zack Marker strip, flat

0808642

<https://www.phoenixcontact.com/au/products/0808642>



Zack Marker strip, flat, Strip, white, unlabeled, can be labeled with: PLOTMARK, CMS-P1-PLOTTER, mounting type: snapped, for terminal block width: 5 mm, lettering field size: 5.1 x 5.2 mm, Number of individual labels: 10

ZBF 5 CUS - Zack Marker strip, flat

0825025

<https://www.phoenixcontact.com/au/products/0825025>



Zack Marker strip, flat, can be ordered: Strip, white, labeled according to customer specifications, mounting type: snap into flat marker groove, for terminal block width: 5 mm, lettering field size: 5.15 x 5.15 mm, Number of individual labels: 10

PTS 2,5-TWIN-PE - Ground terminal

3211935

<https://www.phoenixcontact.com/au/products/3211935>

ZBF 5,LGS:FORTL.ZAHLEN - Zack Marker strip, flat

0808671

<https://www.phoenixcontact.com/au/products/0808671>



Zack Marker strip, flat, Strip, white, labeled, printed horizontally: consecutive numbers 1 ... 10, 11 ... 20, etc. up to 491 ... 500, mounting type: snapped, for terminal block width: 5 mm, lettering field size: 5.15 x 5.15 mm, Number of individual labels: 10

ZBF 5,QR:FORTL.ZAHLEN - Zack Marker strip, flat

0808697

<https://www.phoenixcontact.com/au/products/0808697>



Zack Marker strip, flat, Strip, white, labeled, Printed vertically: consecutive numbers 1 ... 10, 11 ... 20, etc. up to 91 ... 100, mounting type: snapped, for terminal block width: 5 mm, lettering field size: 5.15 x 5.15 mm, Number of individual labels: 10

PTS 2,5-TWIN-PE - Ground terminal

3211935

<https://www.phoenixcontact.com/au/products/3211935>



ZBF 5,LGS:GERADE ZAHLEN - Zack Marker strip, flat

0810821

<https://www.phoenixcontact.com/au/products/0810821>



Zack Marker strip, flat, Strip, white, labeled, printed horizontally: consecutive even numbers 2 ... 20, 22 ... 40, etc. up to 82 ... 100, mounting type: snapped, for terminal block width: 5 mm, lettering field size: 5.15 x 5.15 mm, Number of individual labels: 10

ZBF 5,LGS:UNGERADE ZAHLEN - Zack Marker strip, flat

0810863

<https://www.phoenixcontact.com/au/products/0810863>



Zack Marker strip, flat, Strip, white, labeled, printed horizontally: Odd numbers 1 - 19, 21 - 39, etc. up to 81 - 99, mounting type: snapped, for terminal block width: 5 mm, lettering field size: 5.15 x 5.15 mm, Number of individual labels: 10

PTS 2,5-TWIN-PE - Ground terminal

3211935

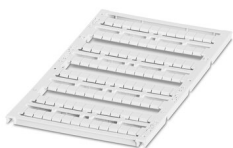
<https://www.phoenixcontact.com/au/products/3211935>



UC-TMF 5 - Marker for terminal blocks

0818153

<https://www.phoenixcontact.com/au/products/0818153>

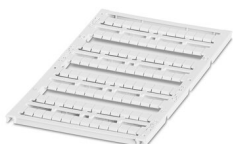


Marker for terminal blocks, Sheet, white, unlabeled, can be labeled with: BLUEMARK ID COLOR, BLUEMARK ID, BLUEMARK CLED, PLOTMARK, CMS-P1-PLOTTER, mounting type: snapped, for terminal block width: 5.2 mm, lettering field size: 4.6 x 5.1 mm, Number of individual labels: 96

UC-TMF 5 CUS - Marker for terminal blocks

0824638

<https://www.phoenixcontact.com/au/products/0824638>



Marker for terminal blocks, can be ordered: by sheet, white, labeled according to customer specifications, mounting type: snap into flat marker groove, for terminal block width: 5.2 mm, lettering field size: 4.6 x 5.1 mm, Number of individual labels: 96

PTS 2,5-TWIN-PE - Ground terminal

3211935

<https://www.phoenixcontact.com/au/products/3211935>

UCT-TMF 5 - Marker for terminal blocks

0828744

<https://www.phoenixcontact.com/au/products/0828744>



Marker for terminal blocks, Sheet, white, unlabeled, can be labeled with: TOPMARK NEO, TOPMARK LASER, BLUEMARK ID COLOR, BLUEMARK ID, BLUEMARK CLED, THERMOMARK PRIME, THERMOMARK CARD 2.0, THERMOMARK CARD, mounting type: snapped, for terminal block width: 5.2 mm, lettering field size: 4.4 x 4.7 mm, Number of individual labels: 72

UCT-TMF 5 CUS - Marker for terminal blocks

0829658

<https://www.phoenixcontact.com/au/products/0829658>



Marker for terminal blocks, can be ordered: by sheet, white, labeled according to customer specifications, mounting type: snap into flat marker groove, for terminal block width: 5.2 mm, lettering field size: 4.4 x 4.7 mm, Number of individual labels: 72

PTS 2,5-TWIN-PE - Ground terminal

3211935

<https://www.phoenixcontact.com/au/products/3211935>



MPS-MT - Test plugs

0201744

<https://www.phoenixcontact.com/au/products/0201744>



Test plugs, with solder connection up to 1 mm² conductor cross section, number of positions: 1, color: gray

MPS-IH WH - Insulating sleeve

0201663

<https://www.phoenixcontact.com/au/products/0201663>

Insulating sleeve, color: white



PTS 2,5-TWIN-PE - Ground terminal

3211935

<https://www.phoenixcontact.com/au/products/3211935>



MPS-IH RD - Insulating sleeve

0201676

<https://www.phoenixcontact.com/au/products/0201676>

Insulating sleeve, color: red

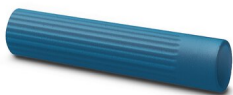


MPS-IH BU - Insulating sleeve

0201689

<https://www.phoenixcontact.com/au/products/0201689>

Insulating sleeve, color: blue



PTS 2,5-TWIN-PE - Ground terminal

3211935

<https://www.phoenixcontact.com/au/products/3211935>



MPS-IH YE - Insulating sleeve

0201692

<https://www.phoenixcontact.com/au/products/0201692>

Insulating sleeve, color: yellow



MPS-IH GN - Insulating sleeve

0201702

<https://www.phoenixcontact.com/au/products/0201702>

Insulating sleeve, color: green



PTS 2,5-TWIN-PE - Ground terminal

3211935

<https://www.phoenixcontact.com/au/products/3211935>



MPS-IH GY - Insulating sleeve

0201728

<https://www.phoenixcontact.com/au/products/0201728>

Insulating sleeve, color: gray



MPS-IH BK - Insulating sleeve

0201731

<https://www.phoenixcontact.com/au/products/0201731>

Insulating sleeve, color: black



PTS 2,5-TWIN-PE - Ground terminal

3211935

<https://www.phoenixcontact.com/au/products/3211935>



ISH 2,5/0,2 - Insulating sleeve

3002843

<https://www.phoenixcontact.com/au/products/3002843>



Insulating sleeve, color: white

ISH 2,5/0,5 - Insulating sleeve

3002856

<https://www.phoenixcontact.com/au/products/3002856>



Insulating sleeve, color: gray

PTS 2,5-TWIN-PE - Ground terminal

3211935

<https://www.phoenixcontact.com/au/products/3211935>



ISH 2,5/1,0 - Insulating sleeve

3002869

<https://www.phoenixcontact.com/au/products/3002869>



Insulating sleeve, color: black

PAI-4-FIX-5/6 BU - Test adapter

3035975

<https://www.phoenixcontact.com/au/products/3035975>



4 mm test adapter, for terminal blocks with 5.2 mm and 6.2 mm pitch

PTS 2,5-TWIN-PE - Ground terminal

3211935

<https://www.phoenixcontact.com/au/products/3211935>



PAI-4-FIX-5/6 OG - Test adapter

3035974

<https://www.phoenixcontact.com/au/products/3035974>



4 mm test adapter, for terminal blocks with 5.2 mm and 6.2 mm pitch

PAI-4-FIX-5/6 YE - Test adapter

3035977

<https://www.phoenixcontact.com/au/products/3035977>



4 mm test adapter, for terminal blocks with 5.2 mm and 6.2 mm pitch

PTS 2,5-TWIN-PE - Ground terminal

3211935

<https://www.phoenixcontact.com/au/products/3211935>

PAI-4-FIX-5/6 RD - Test adapter

3035976

<https://www.phoenixcontact.com/au/products/3035976>



4 mm test adapter, for terminal blocks with 5.2 mm and 6.2 mm pitch

PAI-4-FIX-5/6 GN - Test adapter

3035978

<https://www.phoenixcontact.com/au/products/3035978>



4 mm test adapter, for terminal blocks with 5.2 mm and 6.2 mm pitch

PTS 2,5-TWIN-PE - Ground terminal

3211935

<https://www.phoenixcontact.com/au/products/3211935>

PAI-4-FIX-5/6 BK - Test adapter

3035980

<https://www.phoenixcontact.com/au/products/3035980>



4 mm test adapter, for terminal blocks with 5.2 mm and 6.2 mm pitch

PAI-4-FIX-5/6 GY - Test adapter

3035982

<https://www.phoenixcontact.com/au/products/3035982>



4 mm test adapter, for terminal blocks with 5.2 mm and 6.2 mm pitch

PTS 2,5-TWIN-PE - Ground terminal

3211935

<https://www.phoenixcontact.com/au/products/3211935>

PAI-4-FIX-5/6 VT - Test adapter

3035979

<https://www.phoenixcontact.com/au/products/3035979>



4 mm test adapter, for terminal blocks with 5.2 mm and 6.2 mm pitch

PAI-4-FIX-5/6 BN - Test adapter

3035981

<https://www.phoenixcontact.com/au/products/3035981>



4 mm test adapter, for terminal blocks with 5.2 mm and 6.2 mm pitch

PTS 2,5-TWIN-PE - Ground terminal

3211935

<https://www.phoenixcontact.com/au/products/3211935>



PAI-4-FIX-5/6 WH - Test adapter

3035983

<https://www.phoenixcontact.com/au/products/3035983>



4 mm test adapter, for terminal blocks with 5.2 mm and 6.2 mm pitch

PS-5 - Test plugs

3030983

<https://www.phoenixcontact.com/au/products/3030983>



Test plugs, Modular test plug, number of positions: 1, color: red

PTS 2,5-TWIN-PE - Ground terminal

3211935

<https://www.phoenixcontact.com/au/products/3211935>



DP PS-5 - Spacer plate

3036725

<https://www.phoenixcontact.com/au/products/3036725>



Spacer plate, length: 22.4 mm, width: 5.2 mm, height: 29 mm, number of positions: 1, color: red

PS-5/2,3MM RD - Test plugs

3038723

<https://www.phoenixcontact.com/au/products/3038723>



Test plugs, number of positions: 1, color: red

PTS 2,5-TWIN-PE - Ground terminal

3211935

<https://www.phoenixcontact.com/au/products/3211935>



PROJECT COMPLETE - Software

1050453

<https://www.phoenixcontact.com/au/products/1050453>



Intuitive planning and marking software for configuring terminal strips and for professional marking of marking materials for terminal blocks, conductors, cables, devices, and systems. The software is available for download

CLIPFIX 35 - End clamp

3022218

<https://www.phoenixcontact.com/au/products/3022218>



Quick mounting end clamp for NS 35/7,5 DIN rail or NS 35/15 DIN rail, with marking option, width: 9.5 mm, color: gray

PTS 2,5-TWIN-PE - Ground terminal

3211935

<https://www.phoenixcontact.com/au/products/3211935>



CLIPFIX 35-5 - End clamp

3022276

<https://www.phoenixcontact.com/au/products/3022276>

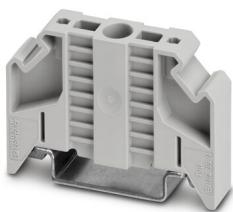


Quick mounting end clamp for NS 35/7,5 DIN rail or NS 35/15 DIN rail, with marking option, with parking option for FBS...5, FBS...6, KSS 5, KSS 6, width: 5.15 mm, color: gray

E/NS 35 N - End clamp

0800886

<https://www.phoenixcontact.com/au/products/0800886>



End clamp, width: 9.5 mm, color: gray

Phoenix Contact 2023 © - all rights reserved
<https://www.phoenixcontact.com>

PHOENIX CONTACT PTY Ltd
Unit 7, 2-8 South Street
Rydalmere NSW 2116
1300 786 411
customerservice@phoenixcontact.com.au